
Validation of DSM2 Volumetric Fingerprints Using Grab Sample Mineral Data

CWEMF Annual Meeting

March 2006

Presentation Content

- Objective
- Methodology
- Results
- Conclusions & Recommendations

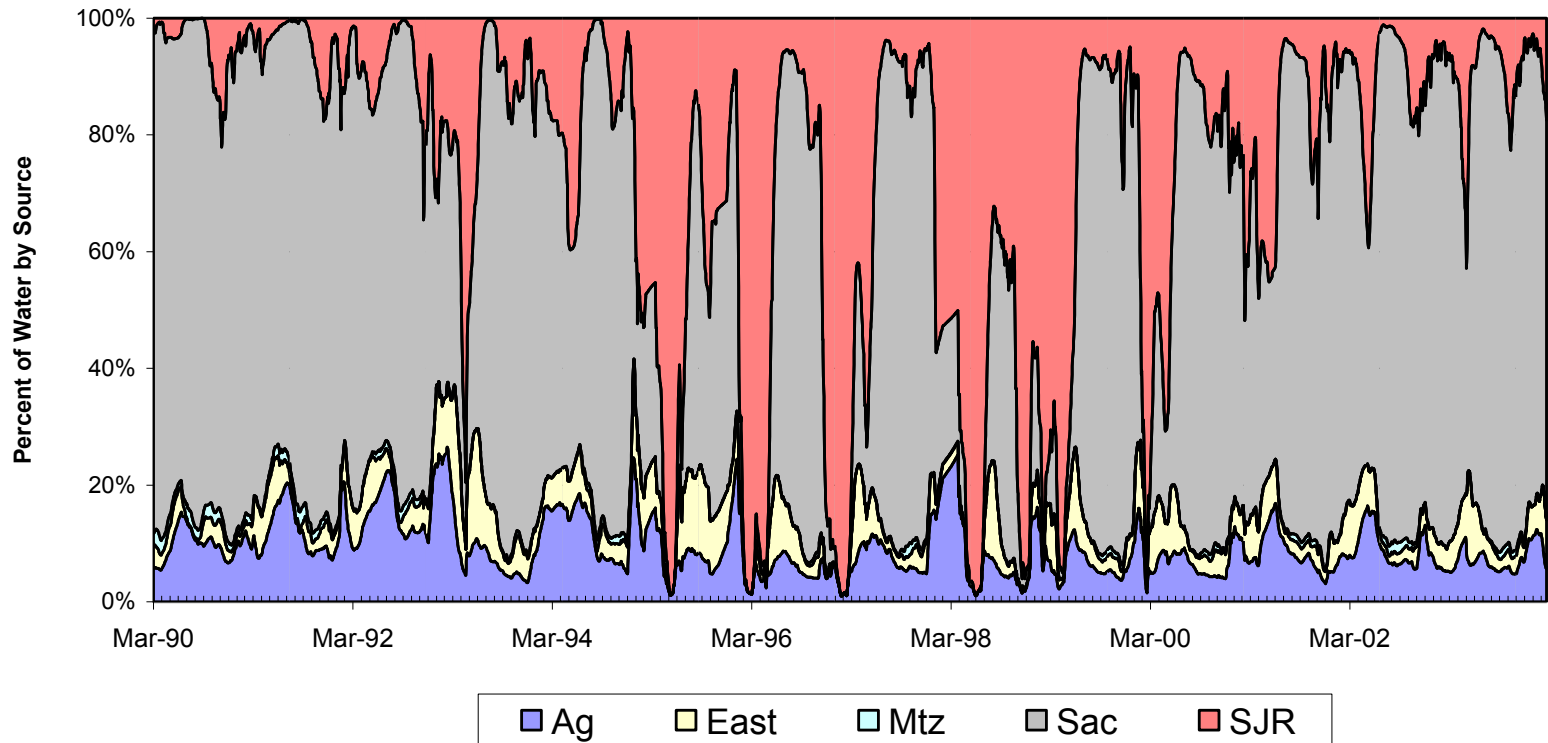
Objective

Develop an approach to validate volumetric fingerprinting results

Validate – According to Webster

To support or corroborate on a sound or authoritative basis

Volumetric Fingerprint at Banks
April 1990 - March 2004



Presentation Content

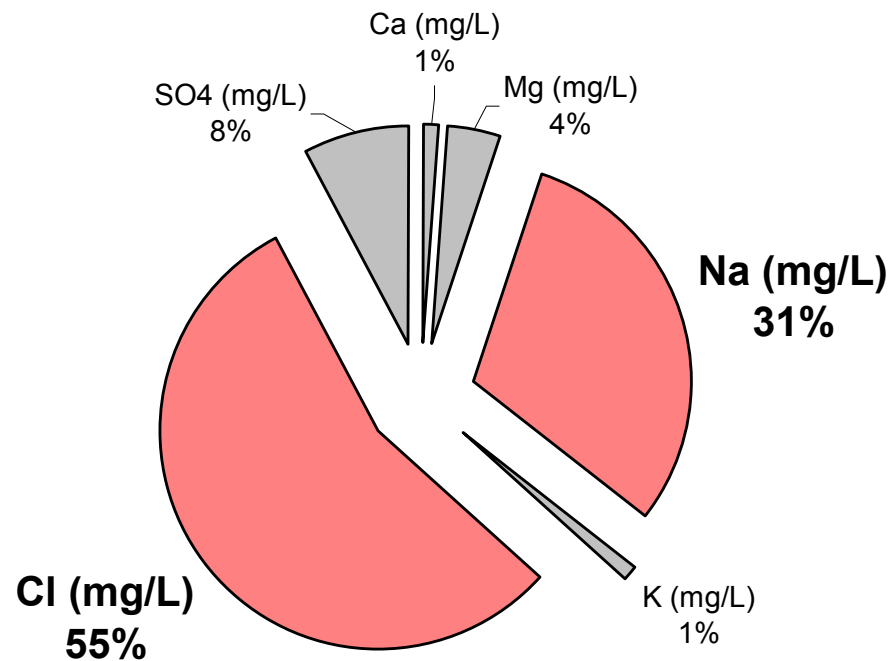
- Objective
- Methodology
 - Typical Mineral Composition of Source Waters
 - Promising Source Fingerprints
 - Data
- Results
- Conclusions & Recommendations

Methodology

Investigate the value of mineral data in fingerprinting source water contributions at various Delta locations

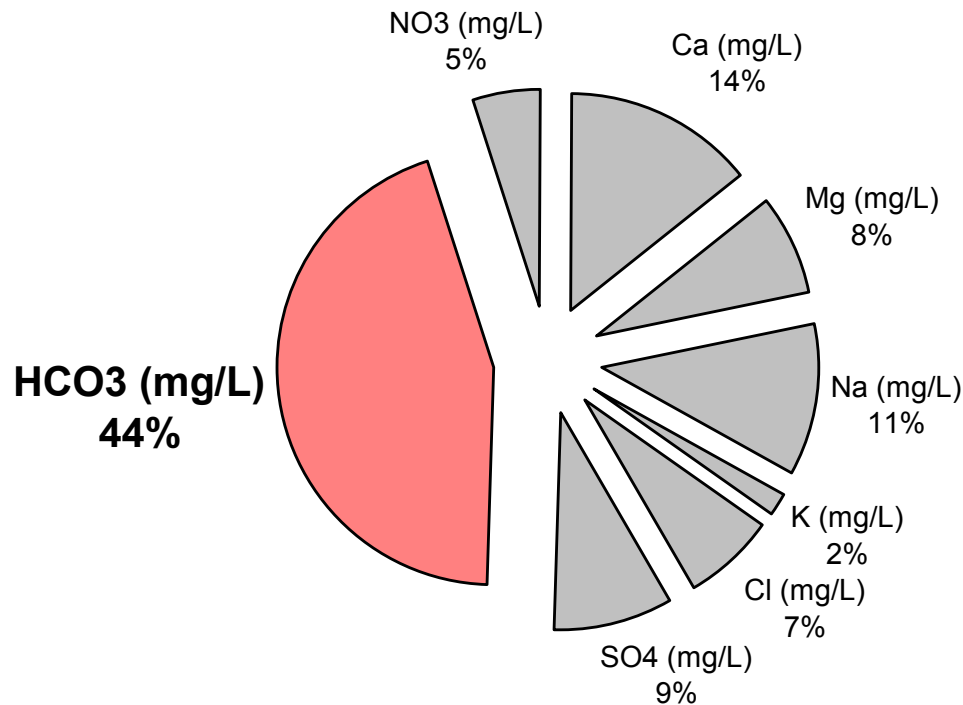
Typical Mineral Composition

Seawater (TDS = 34,500 mg/L)



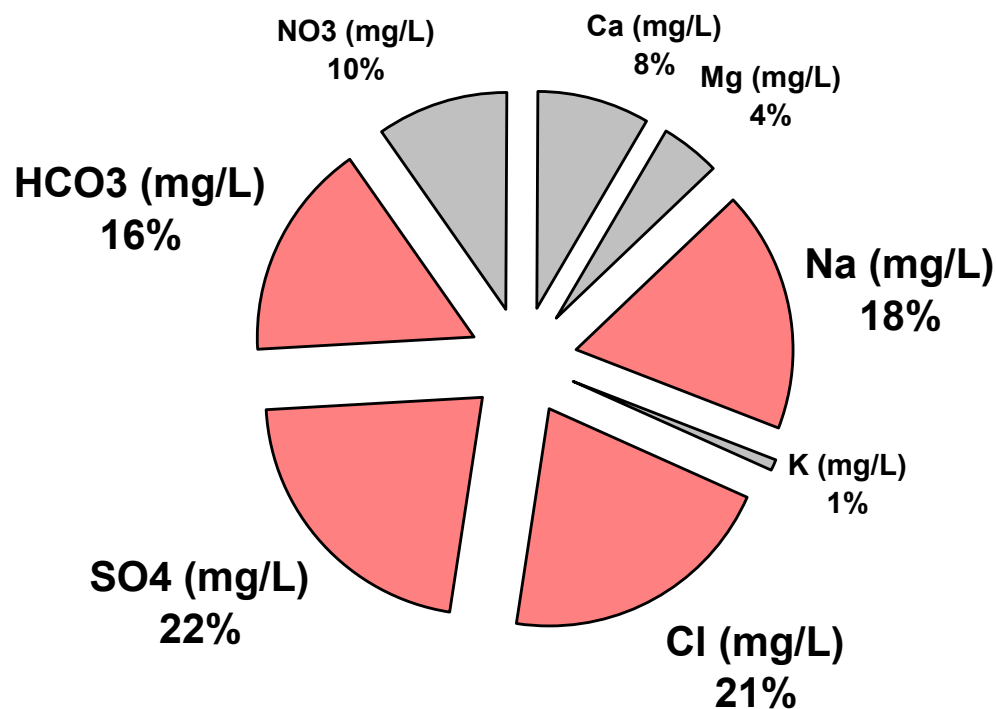
Typical Mineral Composition

Sacramento River at Greenes (TDS = 100 mg/L)



Typical Mineral Composition

San Joaquin River at Vernalis (TDS = 300 mg/L)



Methodology

Promising Source Fingerprints

- Seawater has a high chloride-to-sulfate ratio
 - Seawater ~ 7
 - Sacramento and San Joaquin Rivers ~ 1
- San Joaquin River has a high proportion of sulfate relative to Sacramento River
- Sacramento River has a high proportion of bicarbonate relative to San Joaquin River

Methodology

Data

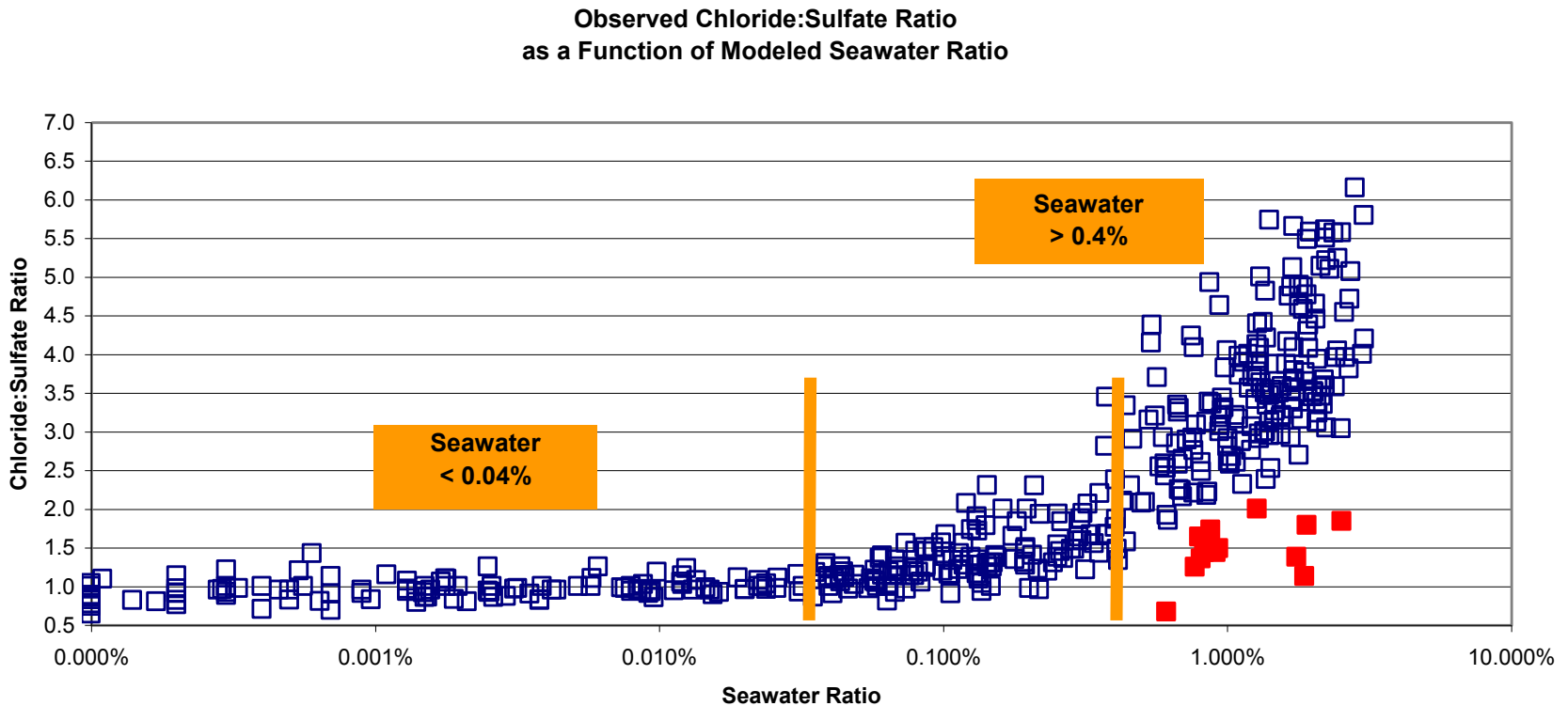
Location	Observations	Period	Source(s)
Old River @ Bacon	156	Nov 1994 – Oct 2005	MWQI
Banks	261	Apr 1990 – Mar 2004	MWQI DWR O&M
Tracy	141	Apr 1990 – May 1999	MWQI

Presentation Content

- Objective
- Methodology
- Results
 - Seawater Fingerprints
 - Riverine Fingerprints
- Conclusions & Recommendations

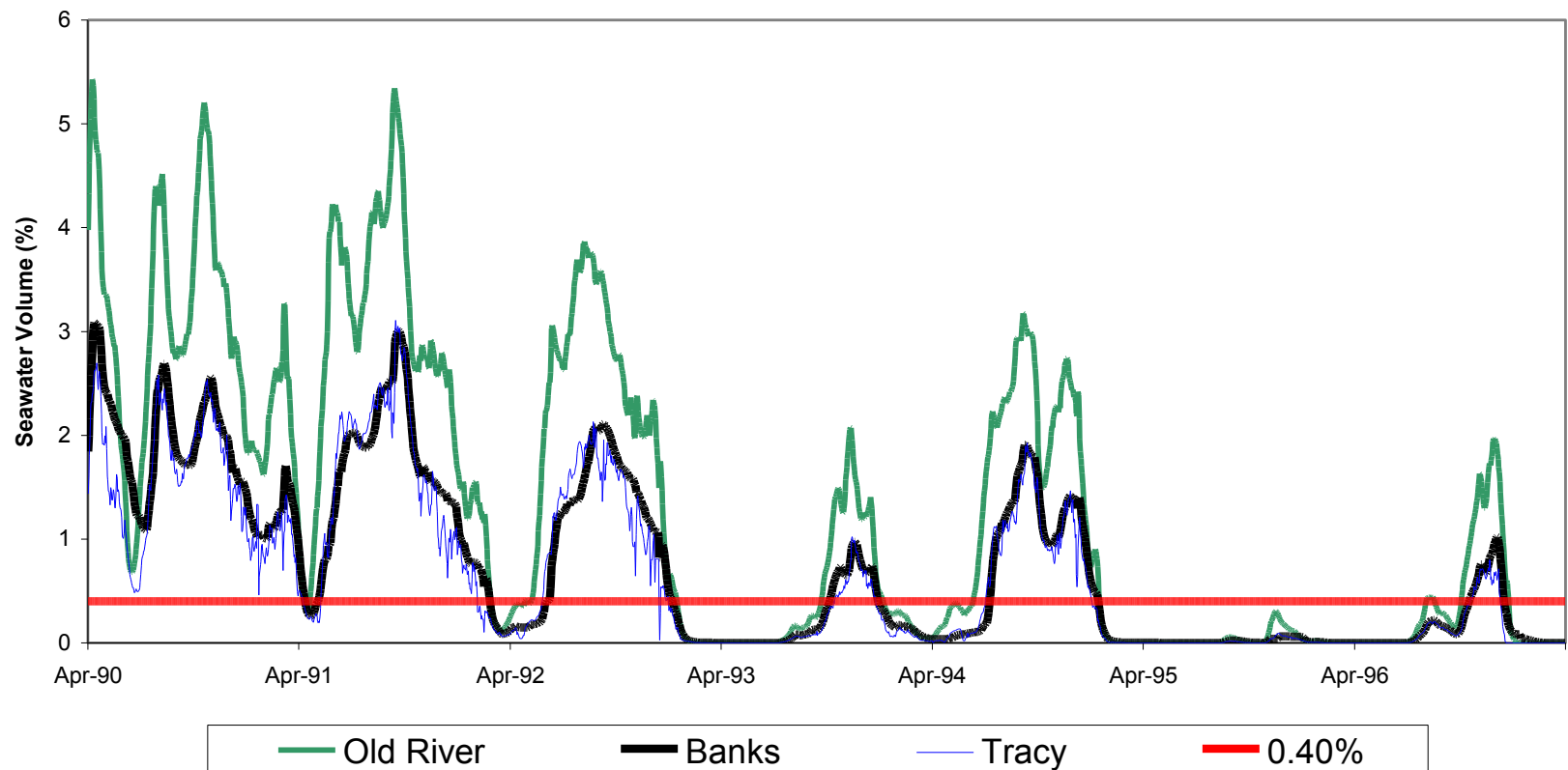
Seawater Fingerprint

Chloride-to-Sulfate Ratio



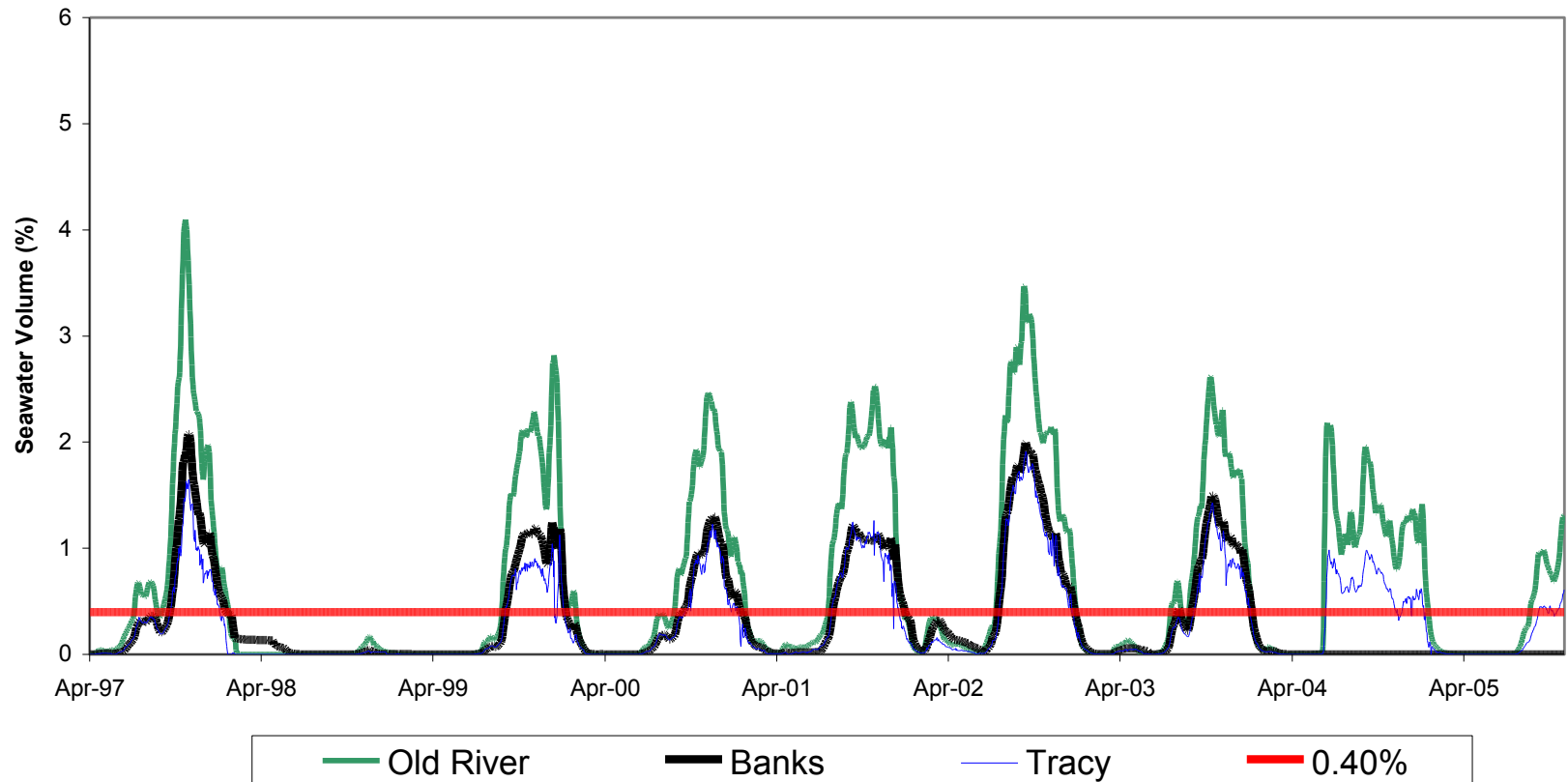
Seawater Fingerprint

Apr 1990 – Mar 1997



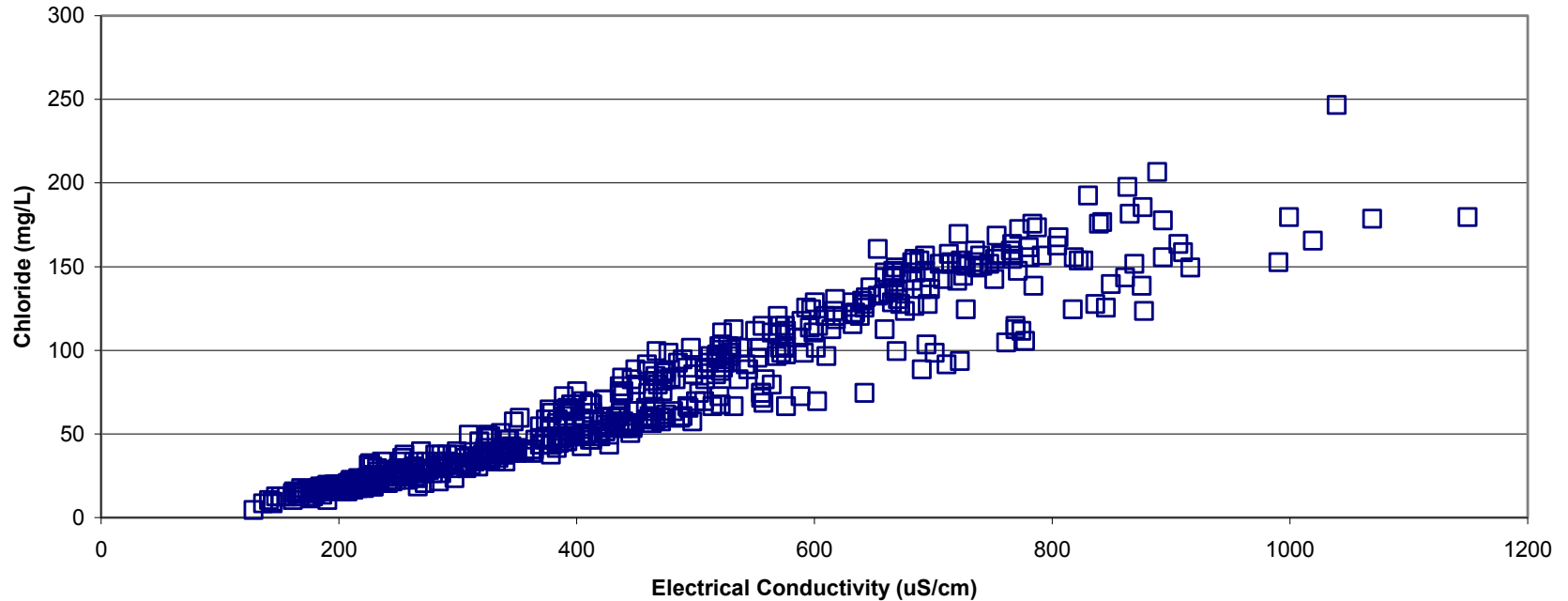
Seawater Fingerprint

Apr 1997 – Oct 2005



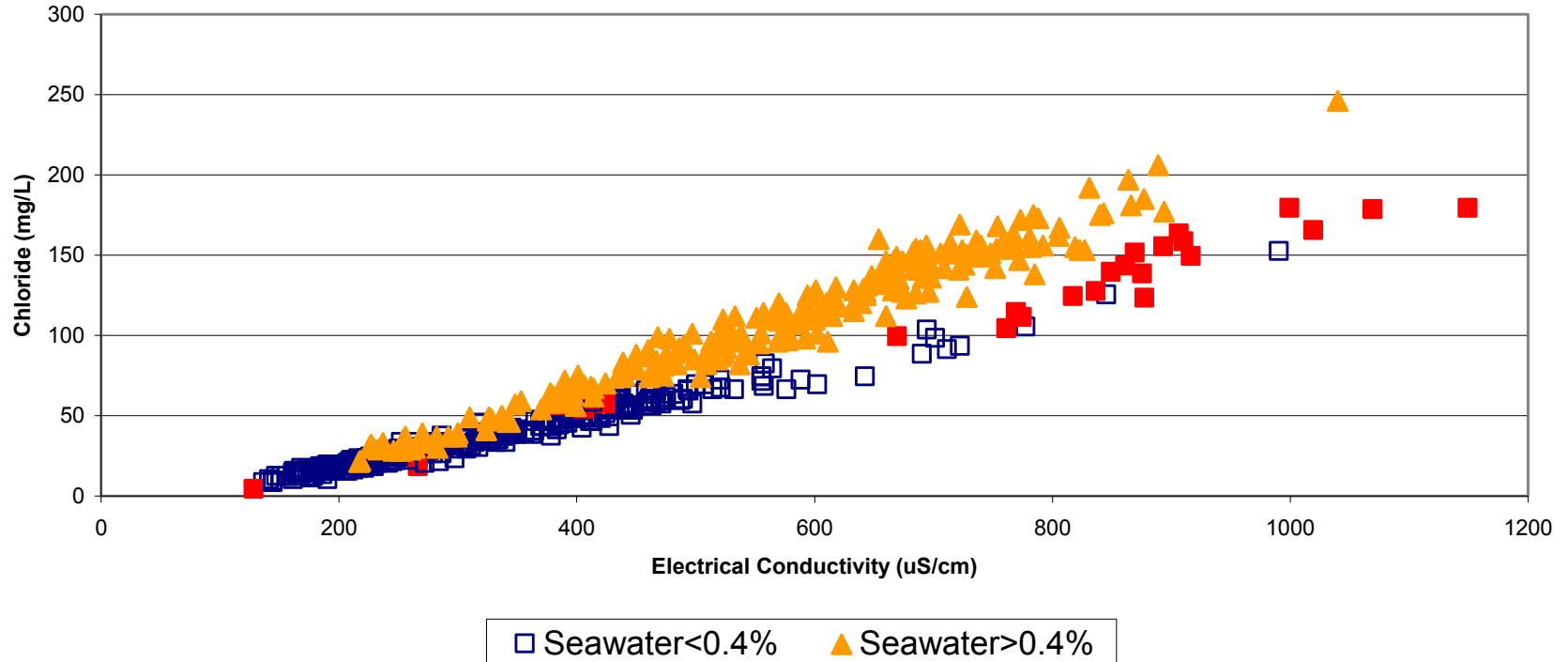
Seawater Fingerprint Chloride

Observed Chloride to EC Relationship
Apr 1990 - Nov 2005

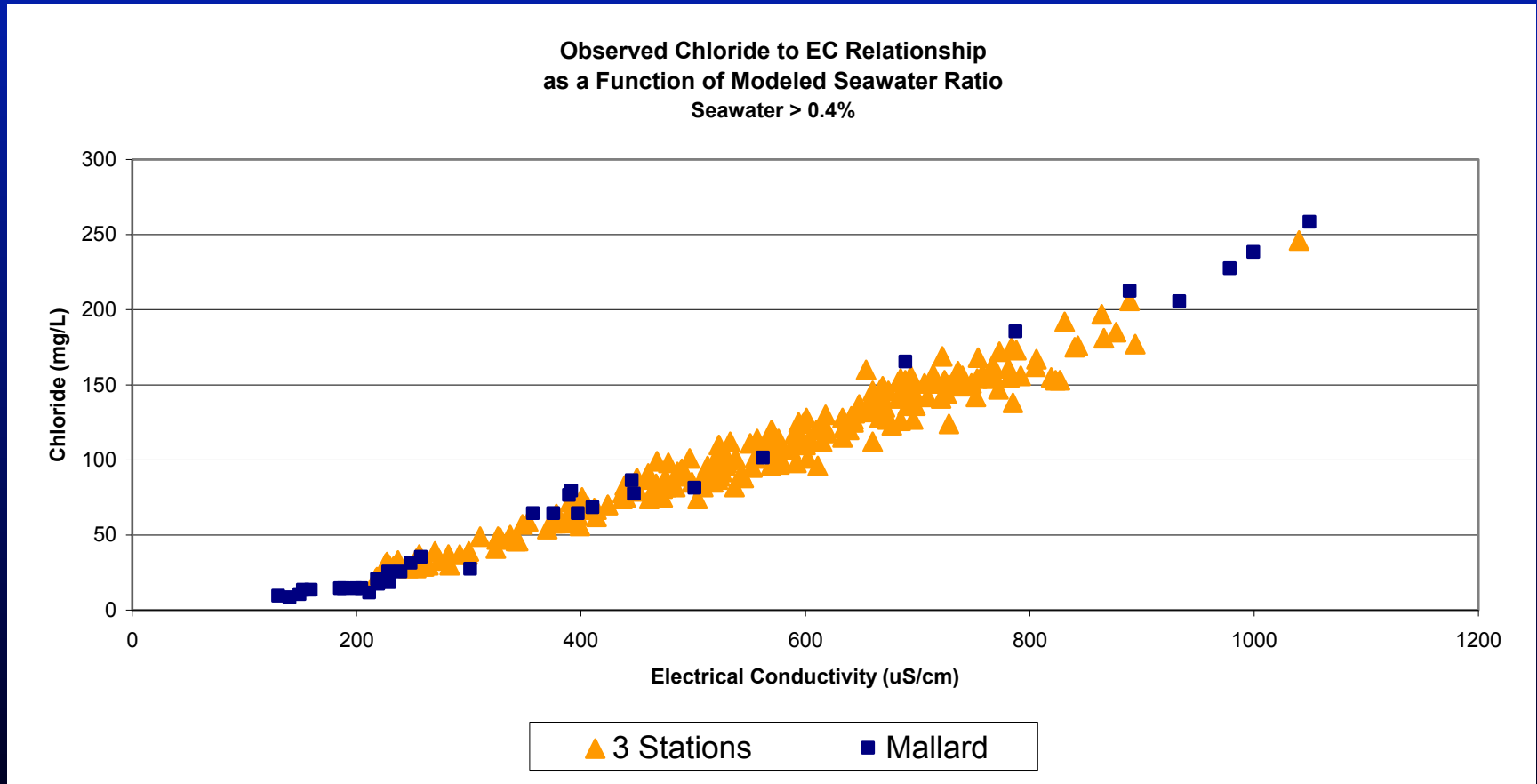


Seawater Fingerprint Chloride

Observed Chloride to EC Relationship
as a Function of Modeled Seawater Ratio

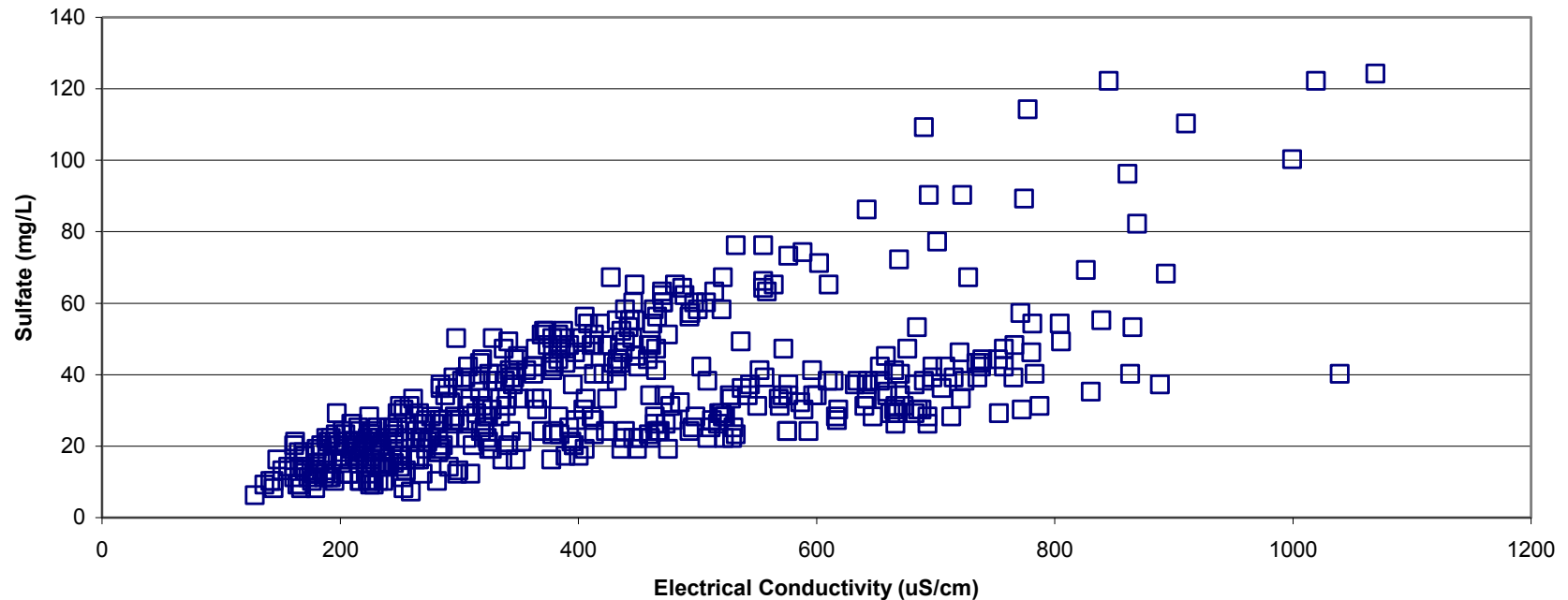


Seawater Fingerprint Chloride

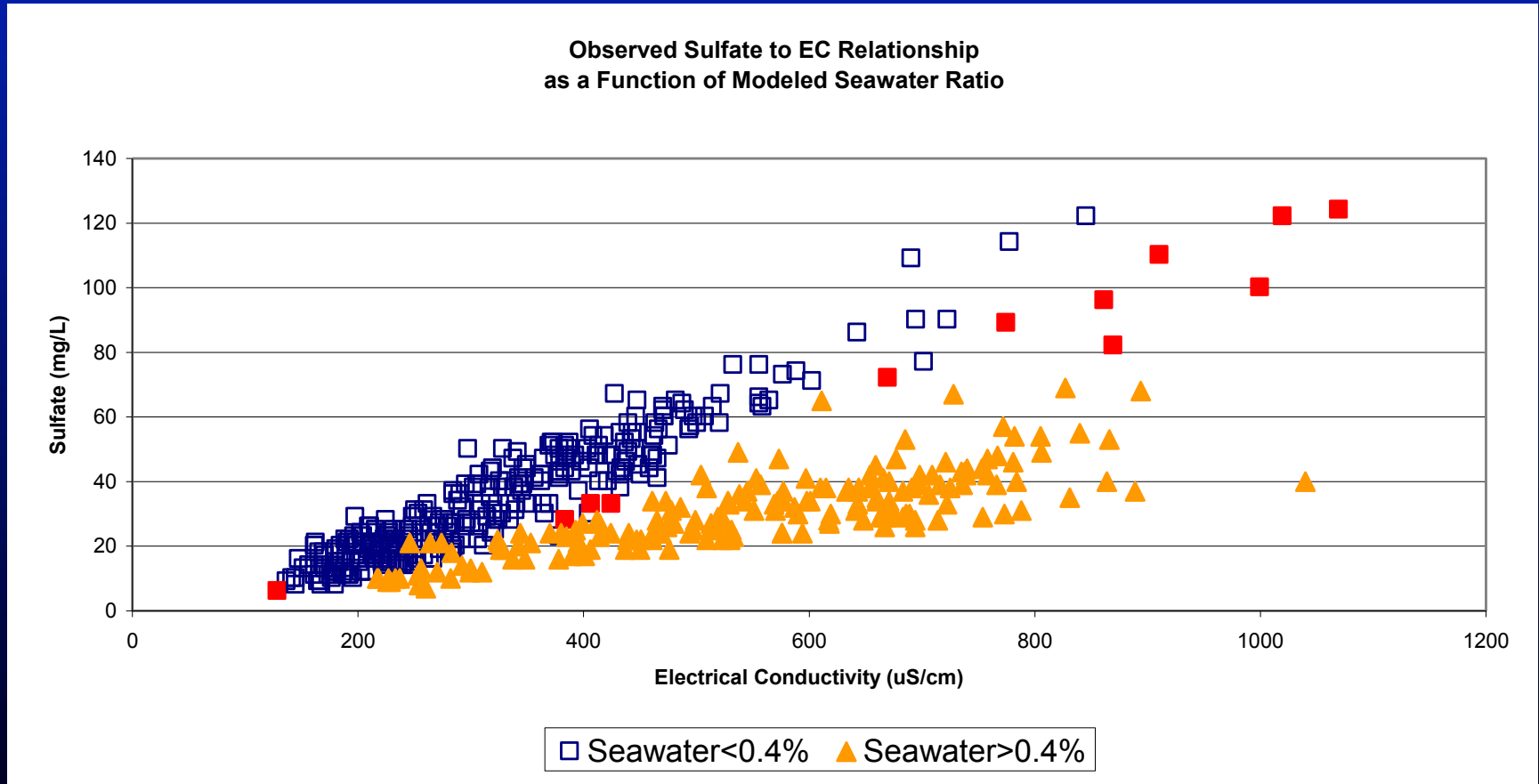


Seawater Fingerprint Sulfate

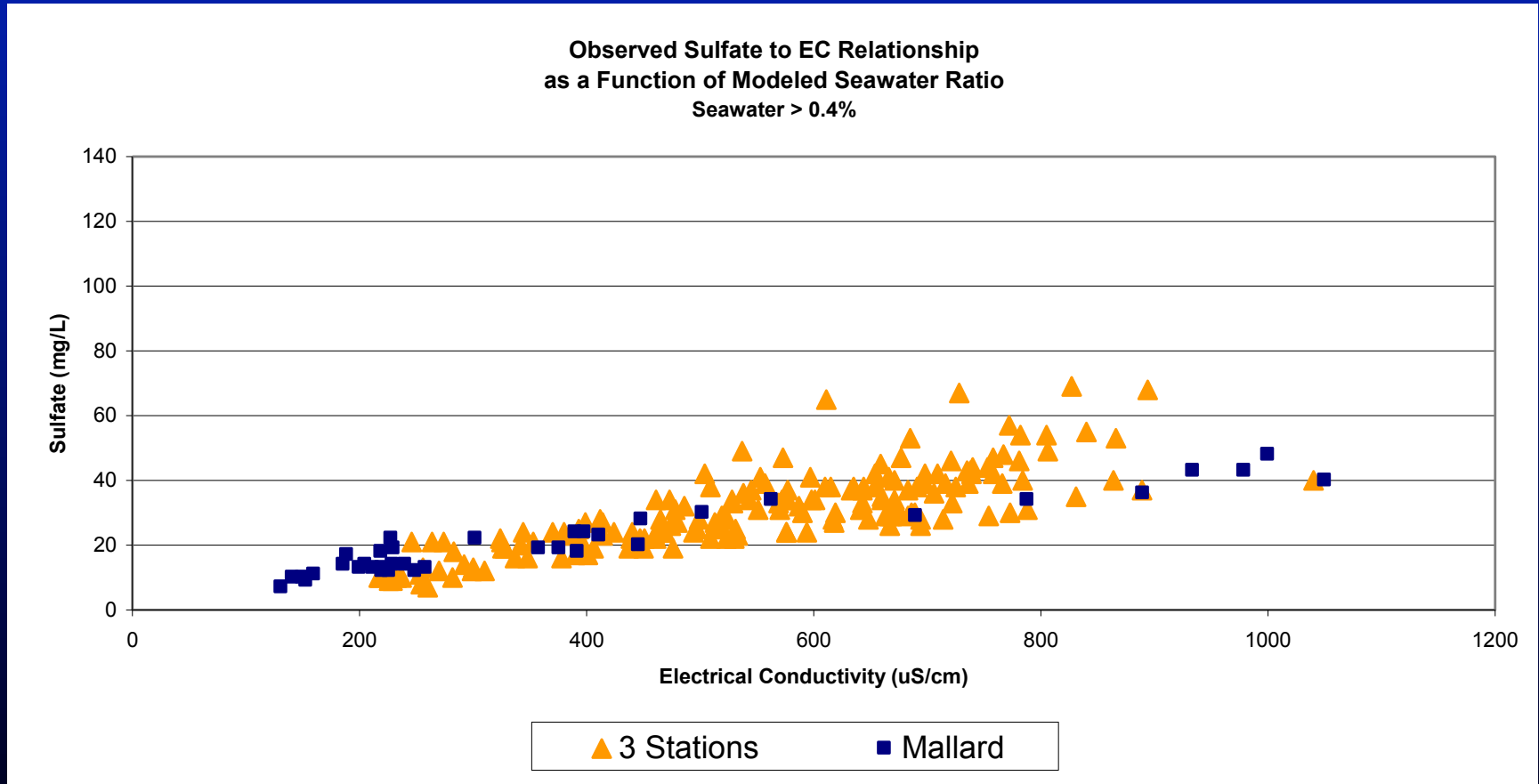
Observed Sulfate to EC Relationship
Apr 1990 - Nov 2005



Seawater Fingerprint Sulfate

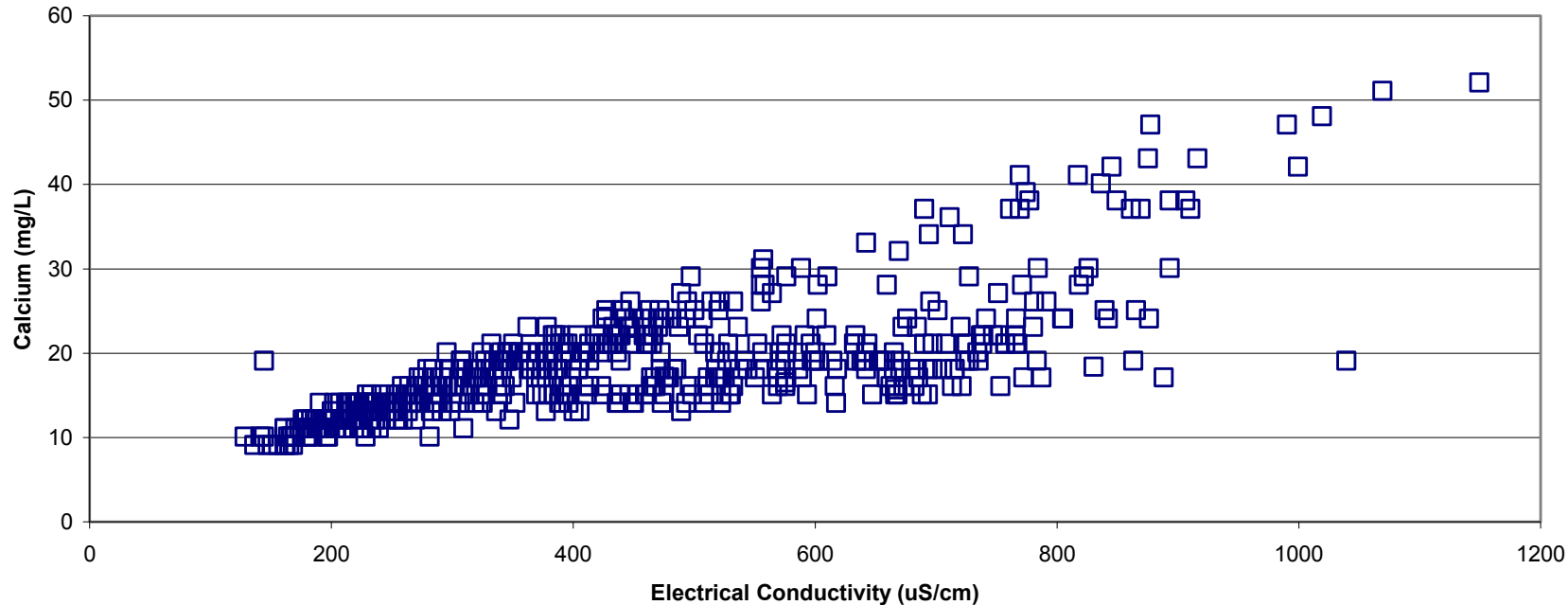


Seawater Fingerprint Sulfate



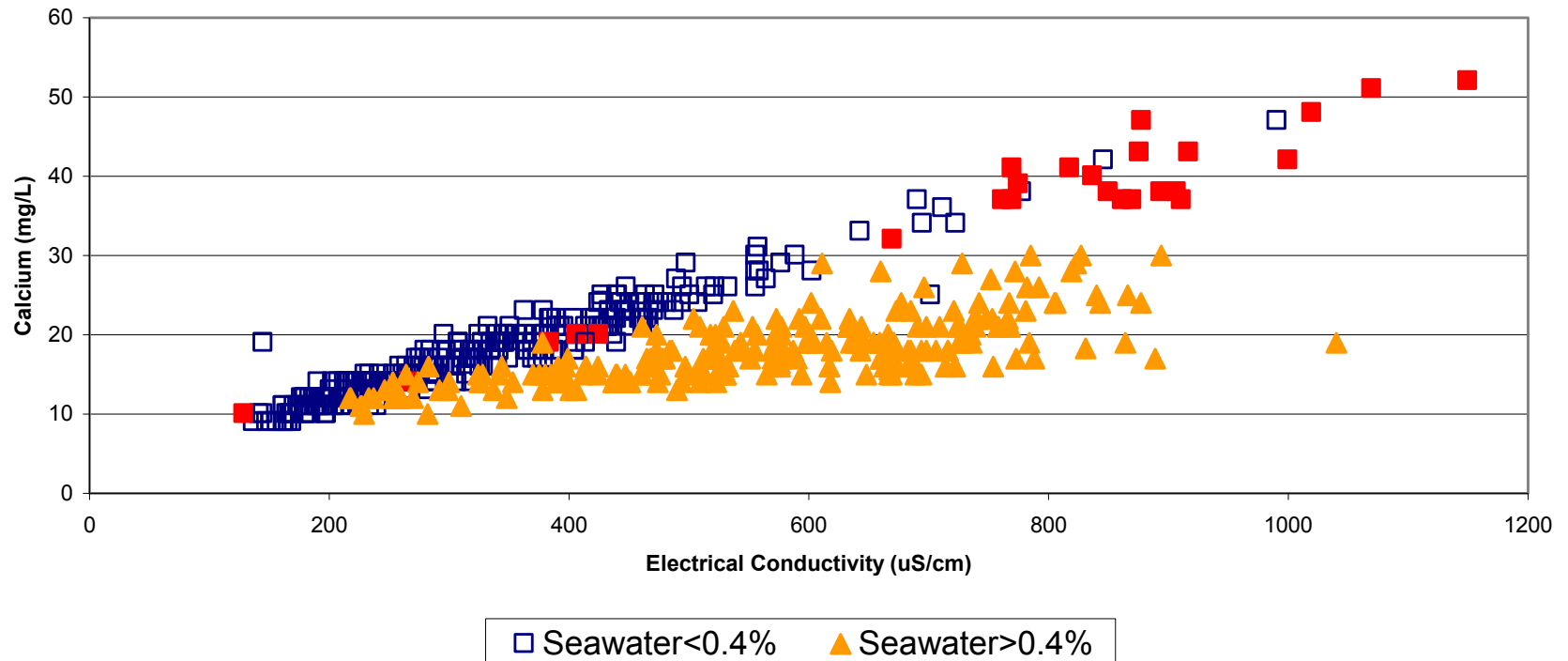
Seawater Fingerprint Calcium

Observed Calcium to EC Relationship
Apr 1990 - Nov 2005



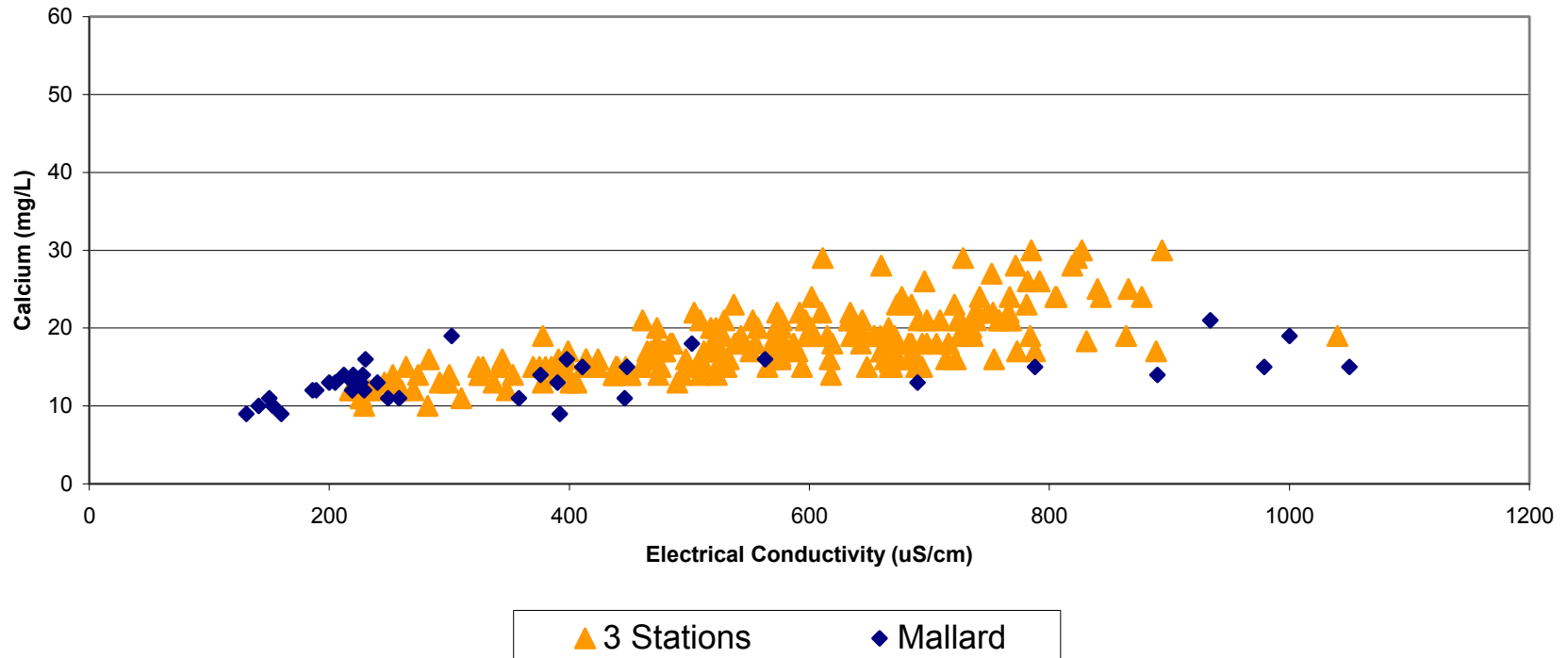
Seawater Fingerprint Calcium

Observed Calcium to EC Relationship
as a Function of Modeled Seawater Ratio



Seawater Fingerprint Calcium

Observed Calcium to EC Relationship
as a Function of Modeled Seawater Ratio
Seawater > 0.4%



Riverine Fingerprints

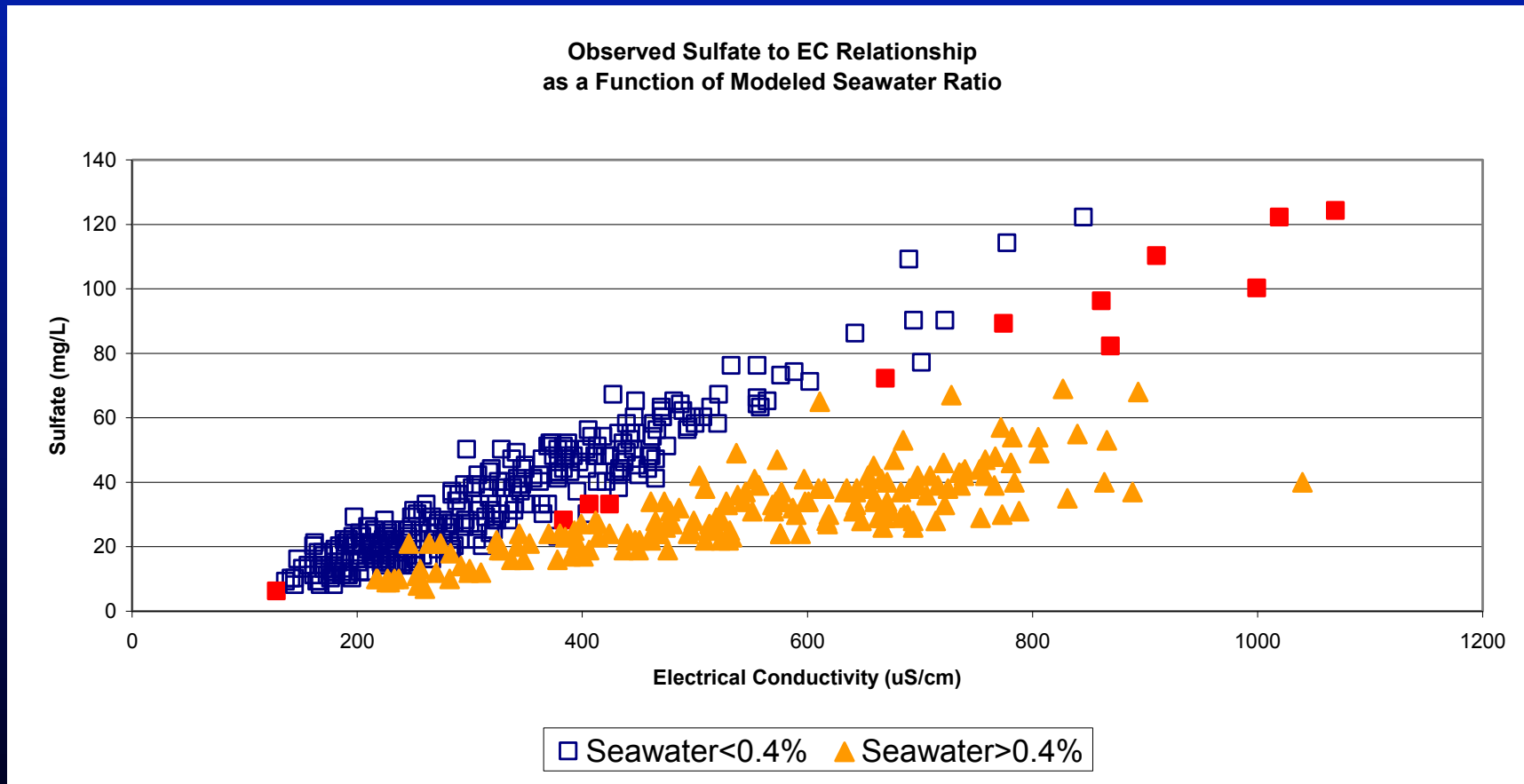
■ Classification

- Sac volume fingerprint $< 20\%$ (dominated by San Joaquin River and agricultural drainage)
- Sac volume fingerprint 20-80%
- Sac volume fingerprint $> 80\%$ (dominated by Sacramento and Mokelumne Rivers)

■ Riverine fingerprints are not detected when seawater $> 0.4\%$

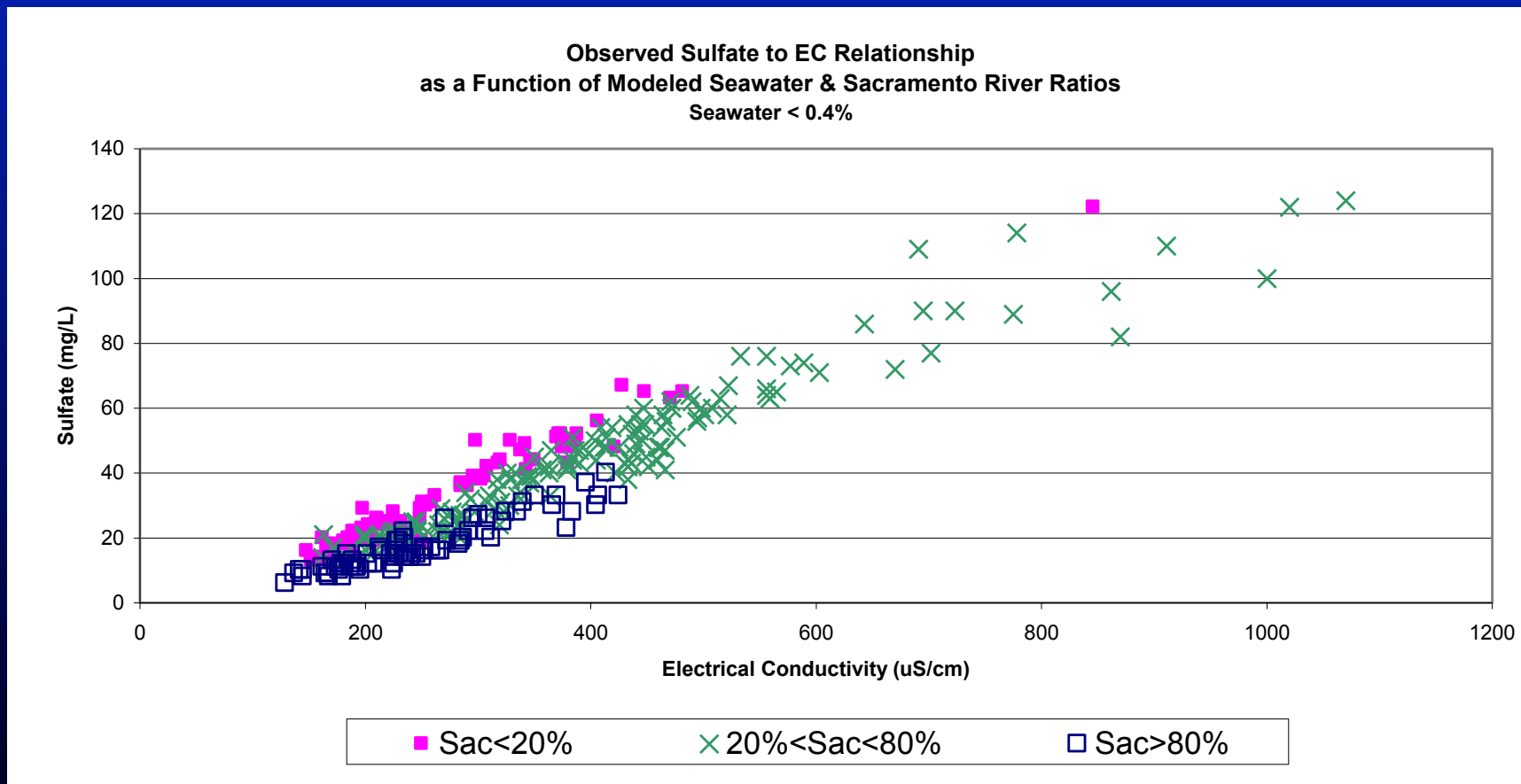
Riverine Fingerprint

Sulfate



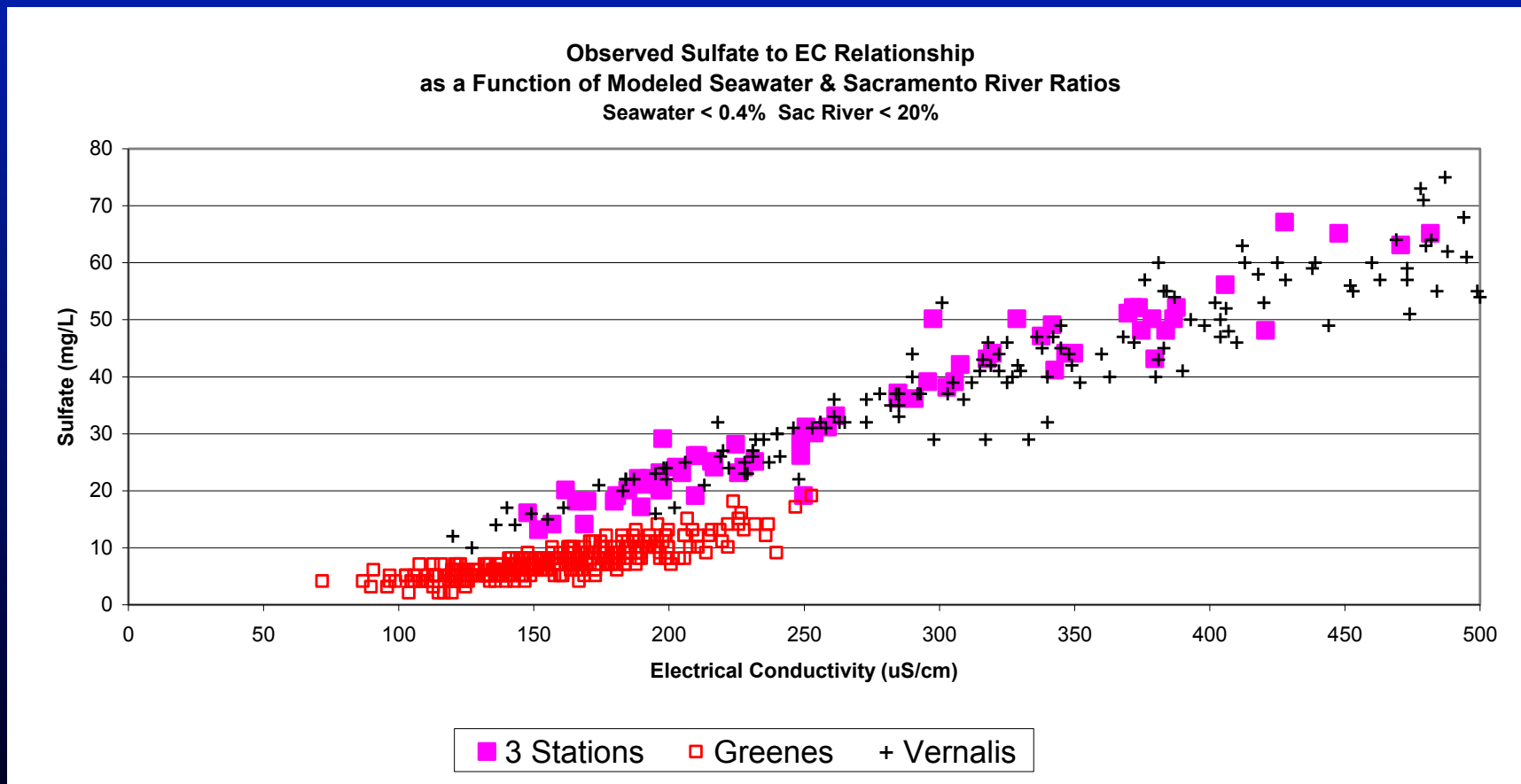
Riverine Fingerprint

Sulfate



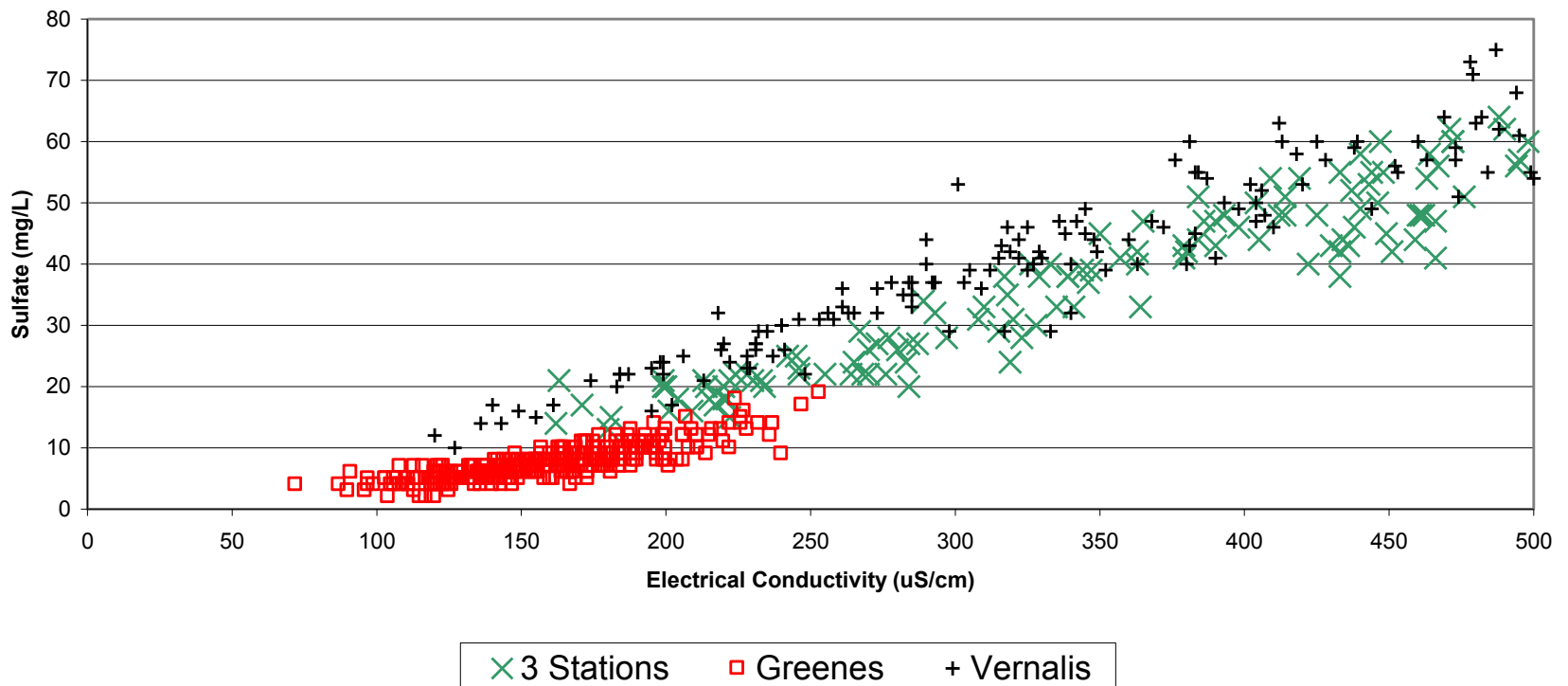
Riverine Fingerprint

Sulfate



Riverine Fingerprint Sulfate

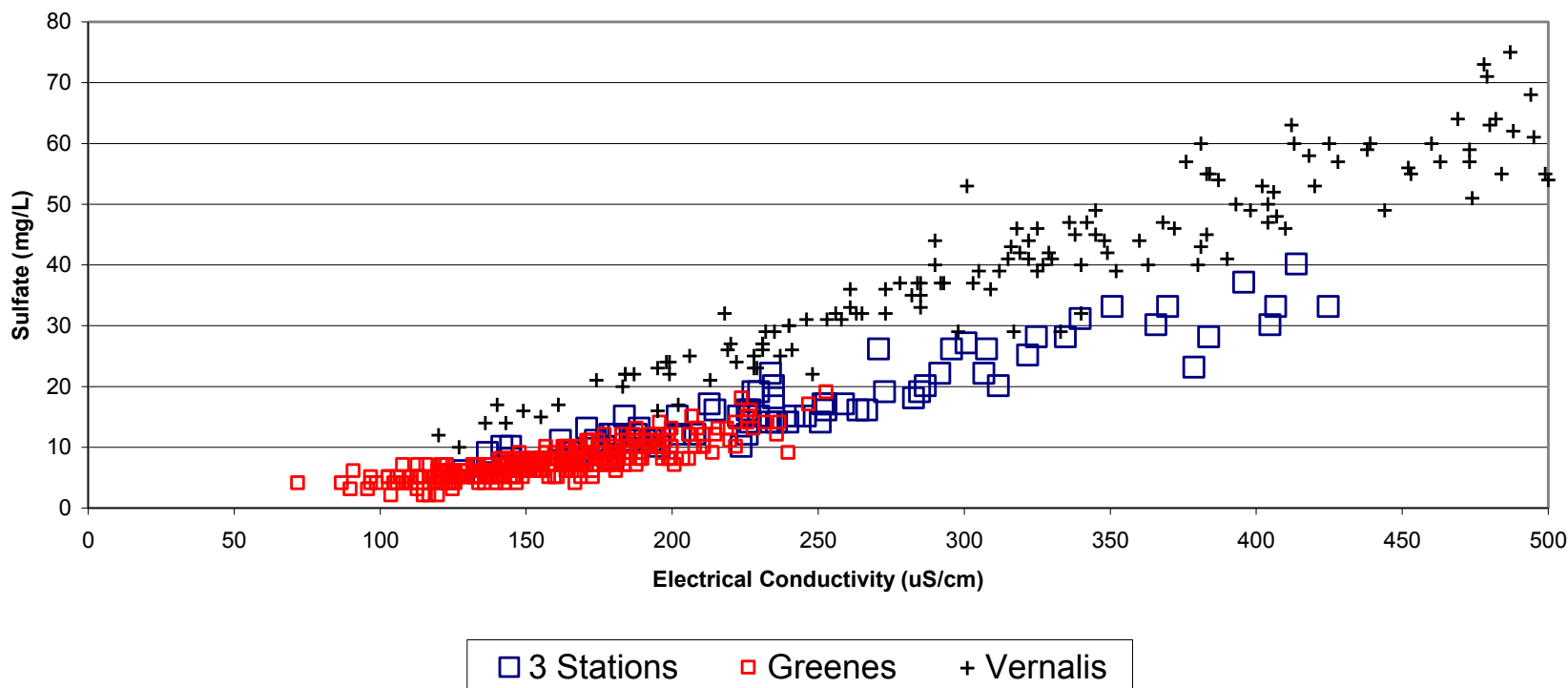
Observed Sulfate to EC Relationship
as a Function of Modeled Seawater & Sacramento River Ratios
Seawater < 0.4% 20% < Sac River < 80%



Riverine Fingerprint

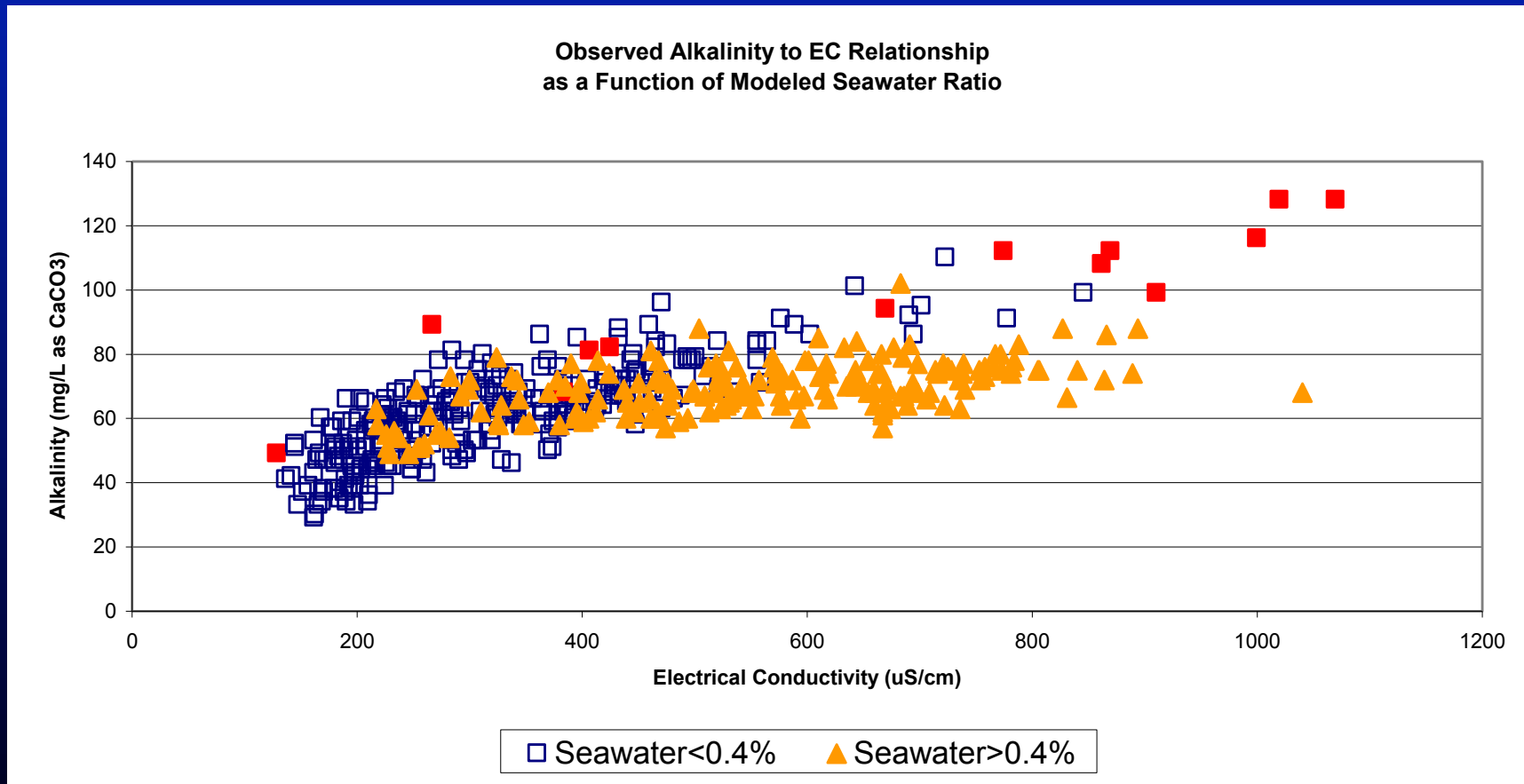
Sulfate

Observed Sulfate to EC Relationship
as a Function of Modeled Seawater & Sacramento River Ratios
Seawater < 0.4% Sac River > 80%



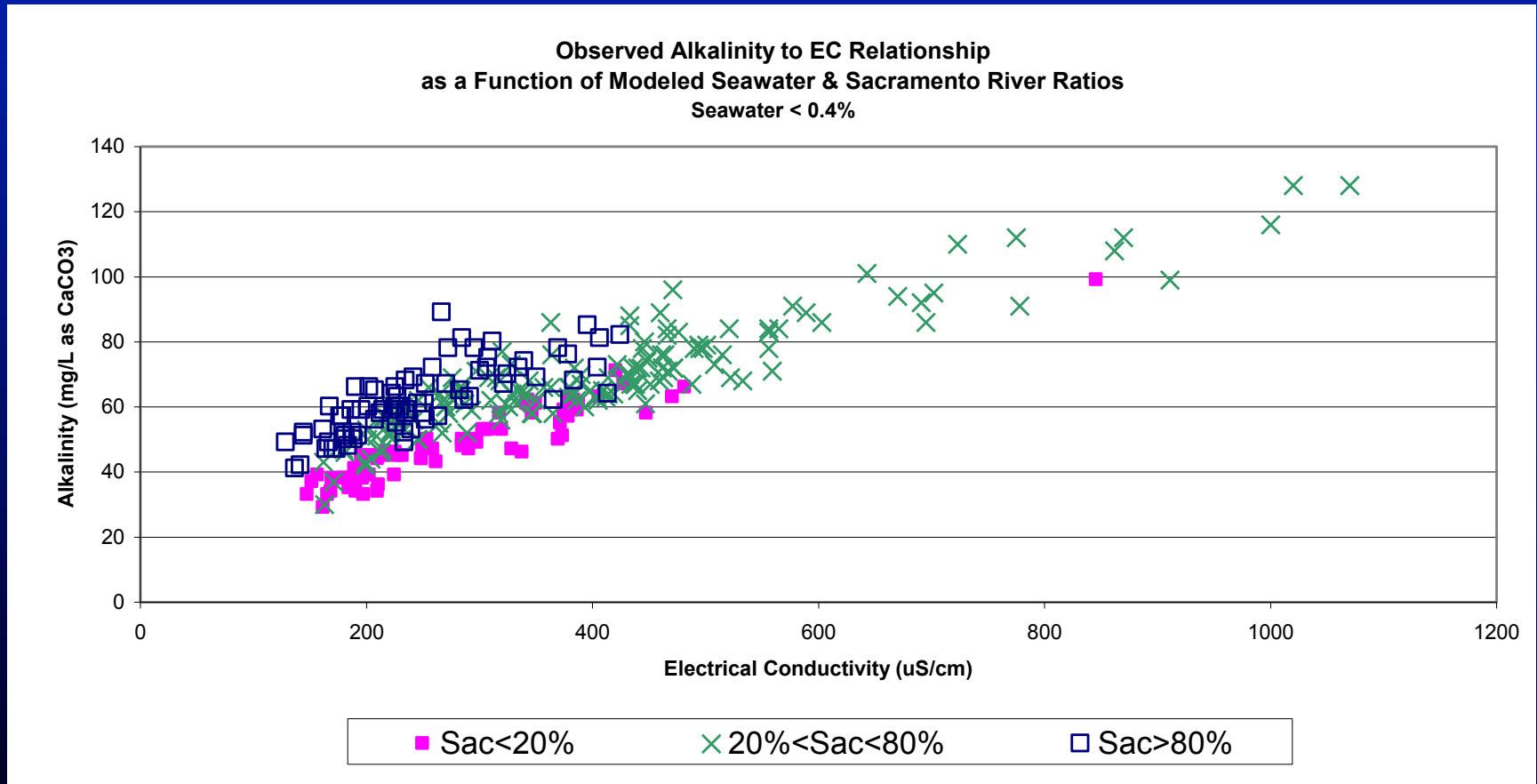
Riverine Fingerprint

Bicarbonate



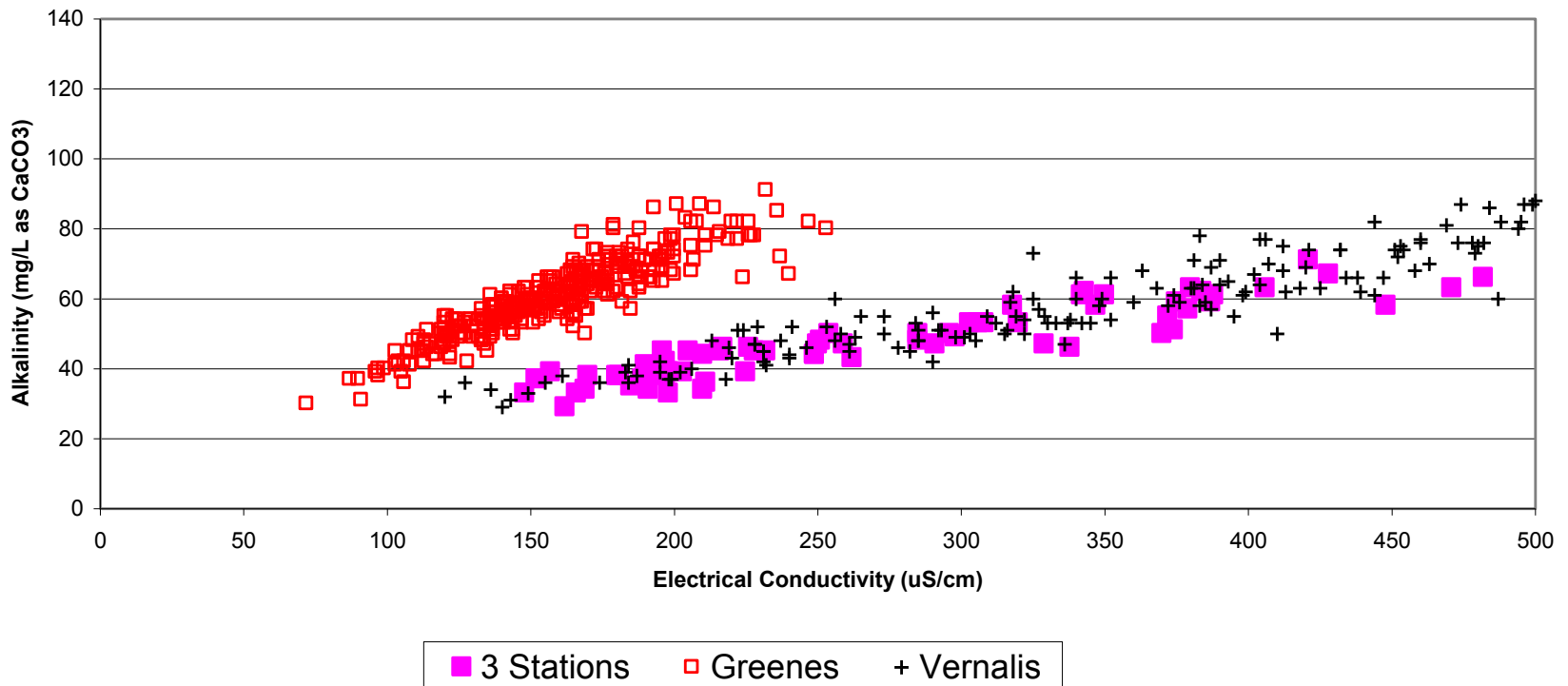
Riverine Fingerprint

Bicarbonate

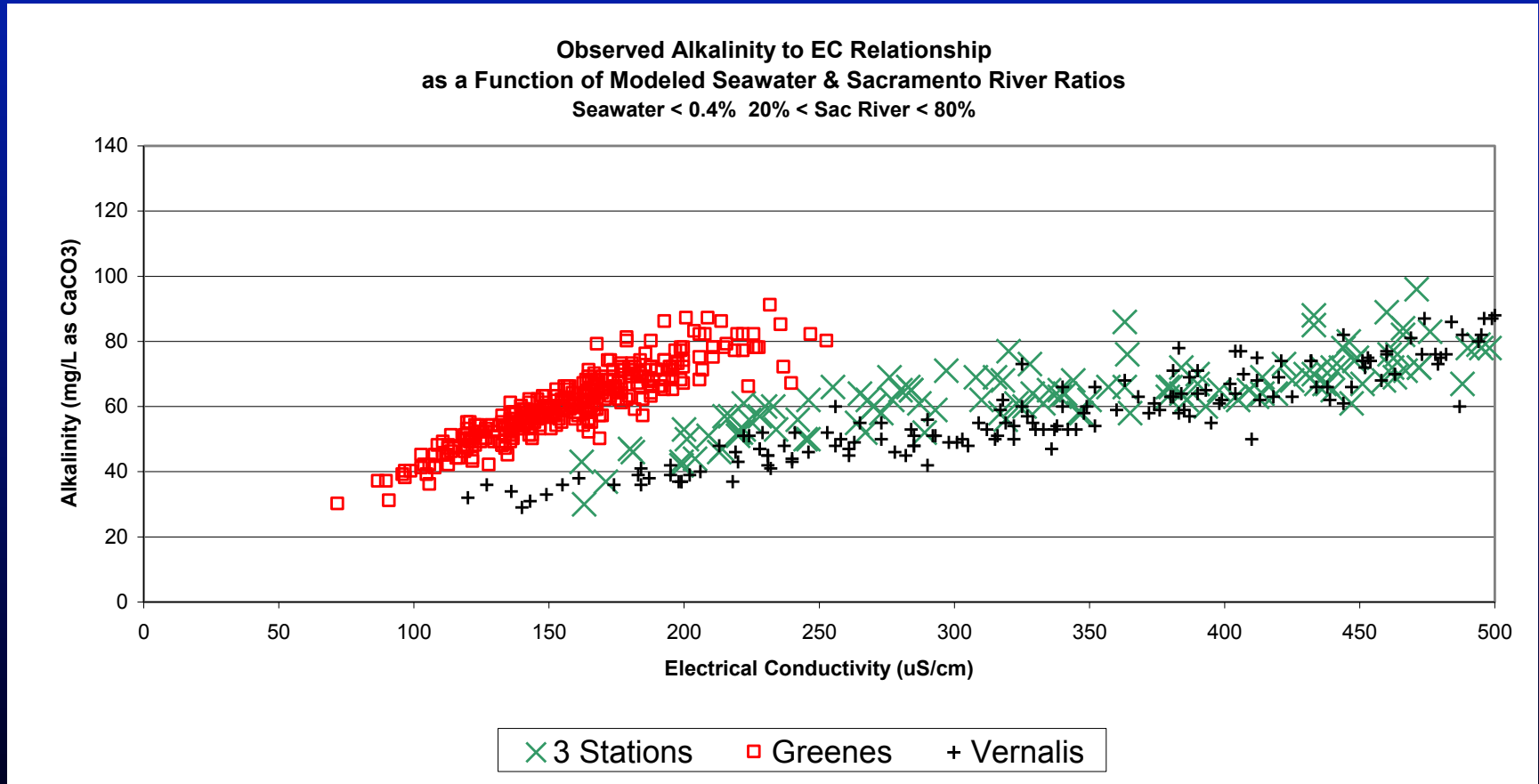


Riverine Fingerprint Bicarbonate

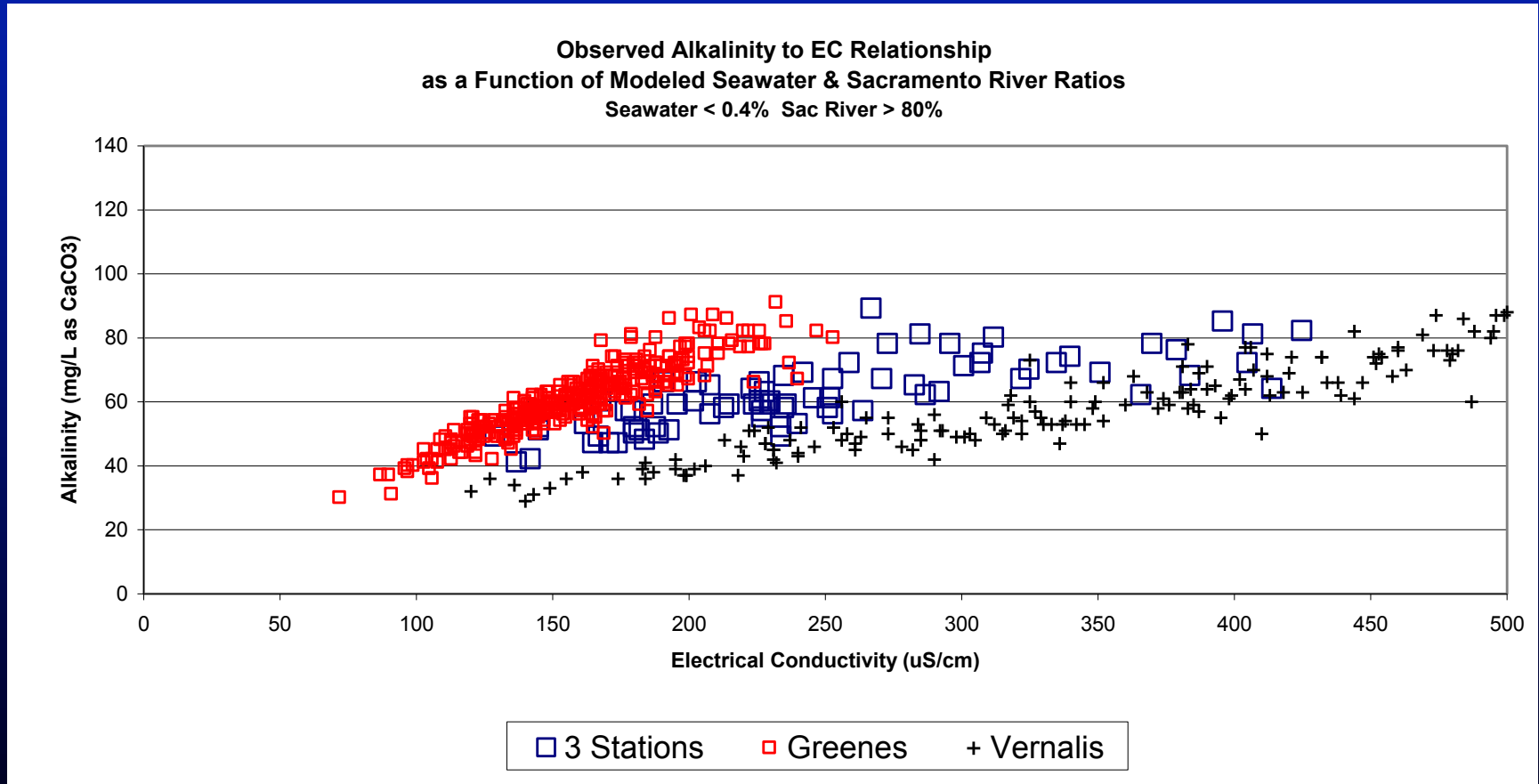
Observed Old River @ Bacon Alkalinity to EC Relationship
as a Function of Modeled Seawater & Sacramento River Ratios
Seawater < 0.4% Sac River < 20%



Riverine Fingerprint Bicarbonate



Riverine Fingerprint Bicarbonate



Presentation Content

- Objective
- Methodology
- Results
- Conclusions & Recommendations

Conclusions

- **Observed relationships between mineral concentrations and electrical conductivity correspond to modeled seawater influence. Anion data provide the most obvious fingerprints of seawater influence.**
- **Observed relationships between sulfate / bicarbonate concentrations and electrical conductivity correspond to modeled Sacramento and San Joaquin River influences.**
- **Mineral data provide an indirect means to validate DSM2 volumetric fingerprints.**

Recommendations

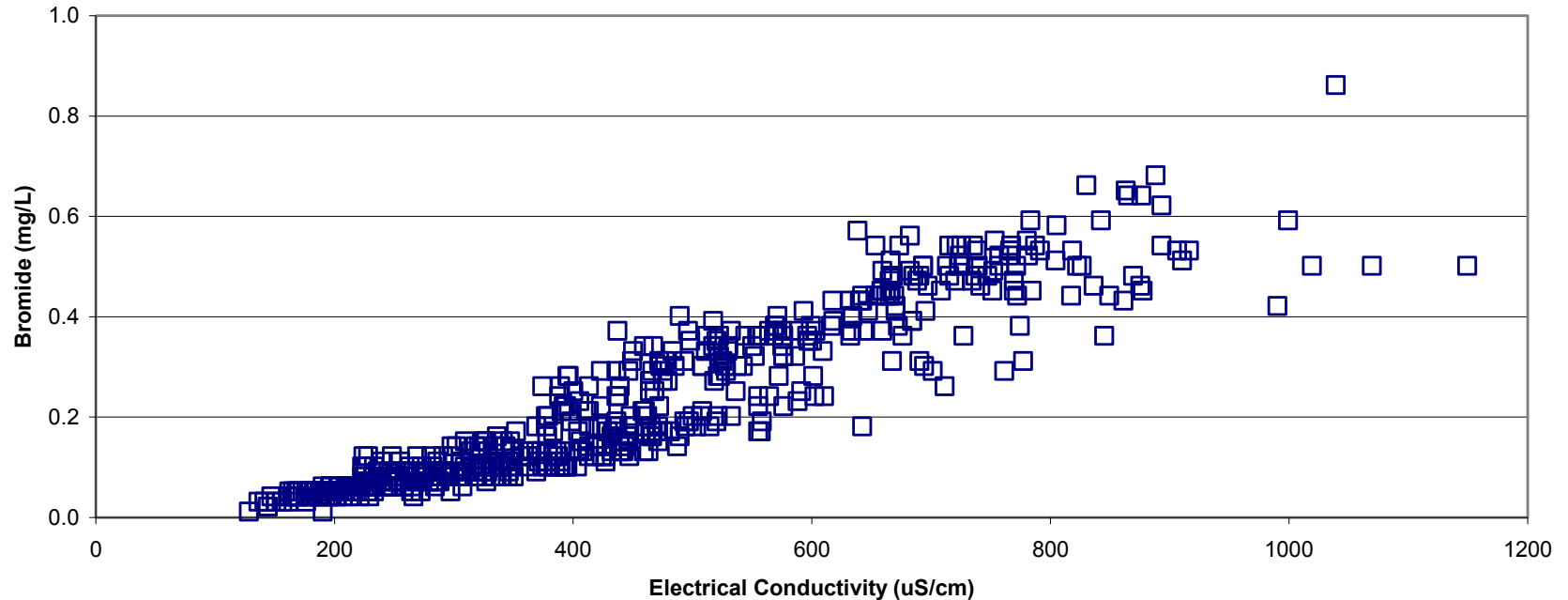
- **Refine regression relationships between electrical conductivity and mineral concentrations at various Delta locations.**
 - Potential use in water quality forecasts and planning studies
 - Potential use in DSM2 validation
- **Investigate outlier data (Tracy 1990-92)**
- **Collect more mineral data in the Delta. Anion data is particularly valuable.**

Extra Slides

Seawater Fingerprint

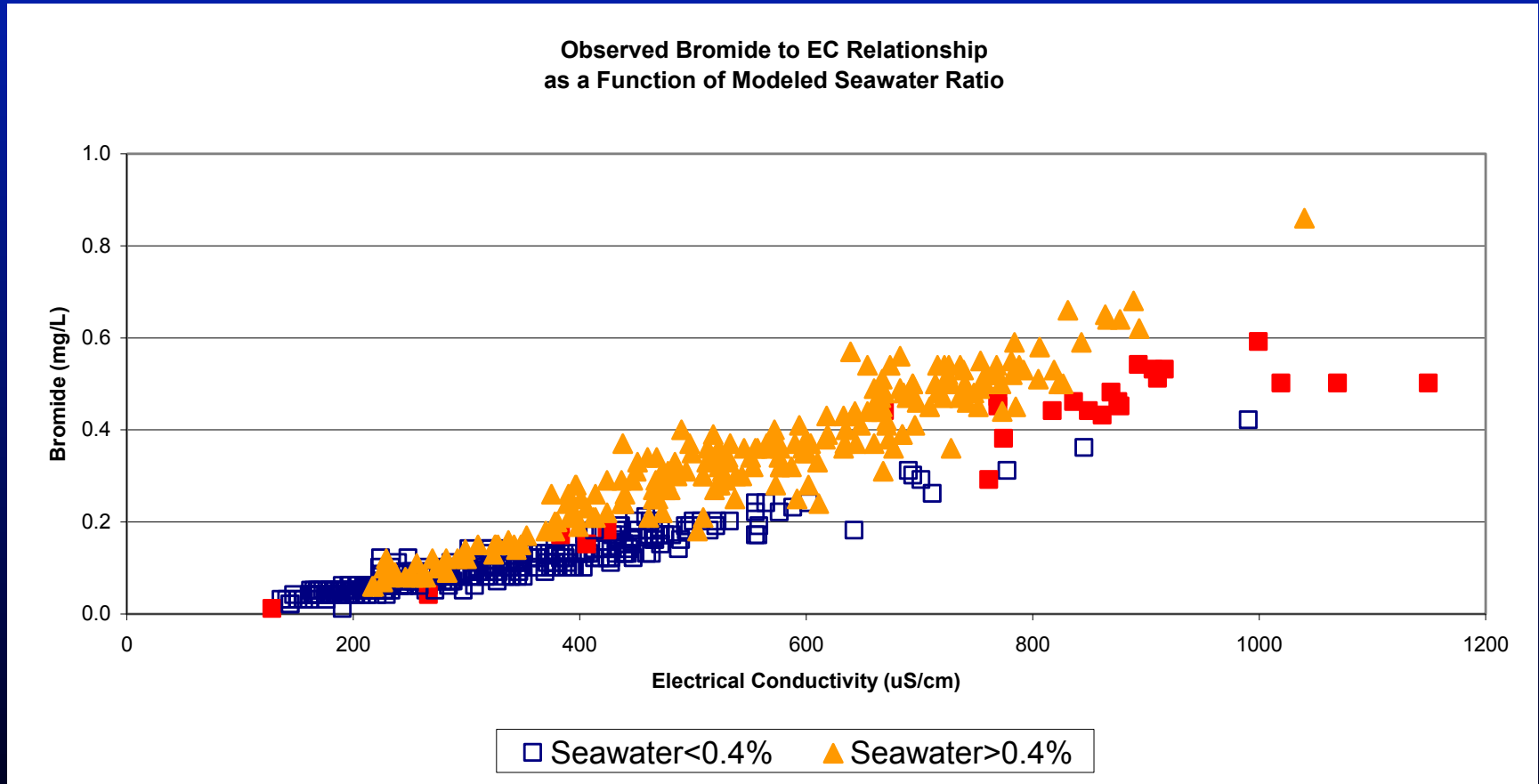
Bromide

Observed Bromide to EC Relationship
Apr 1990 - Nov 2005



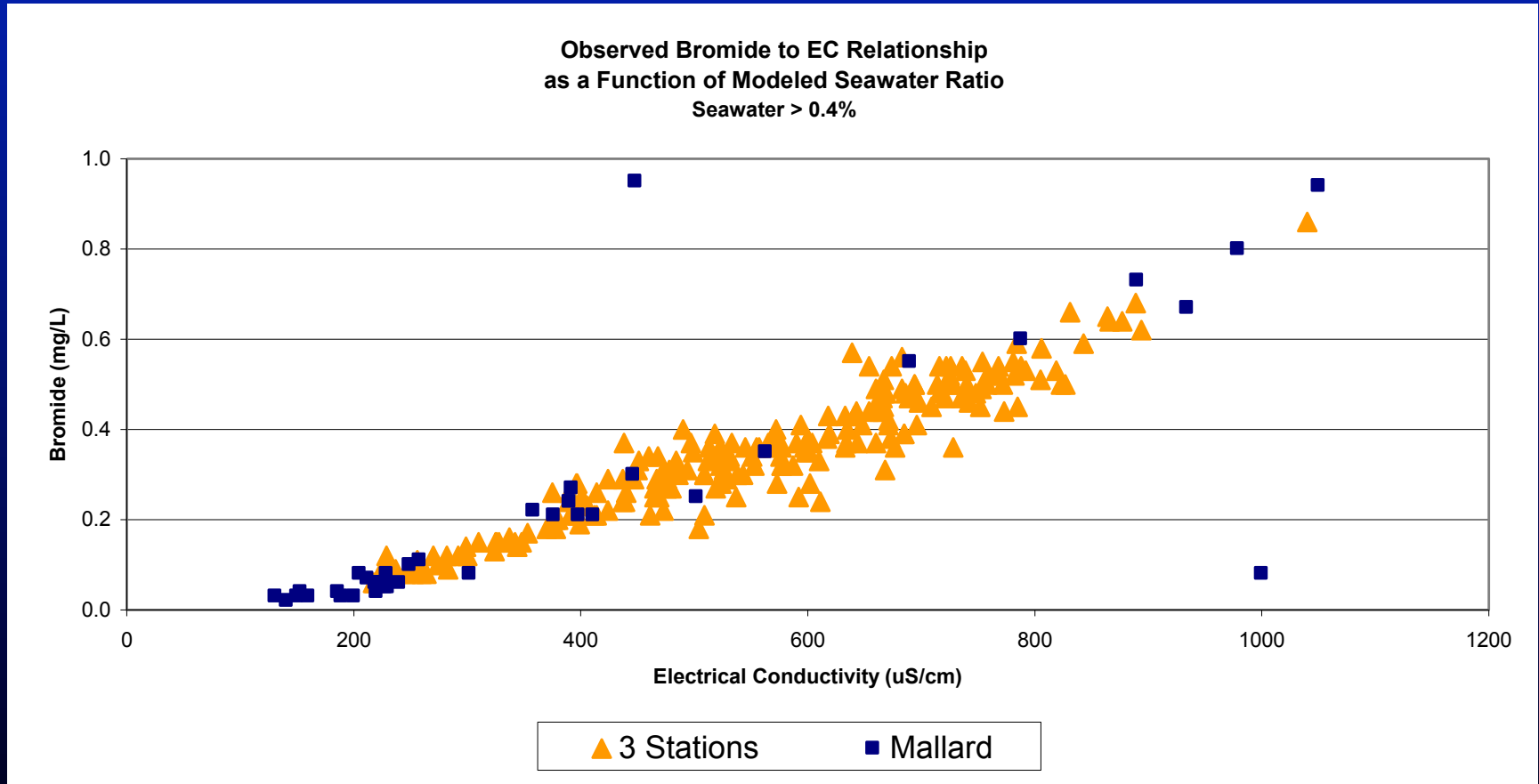
Seawater Fingerprint

Bromide



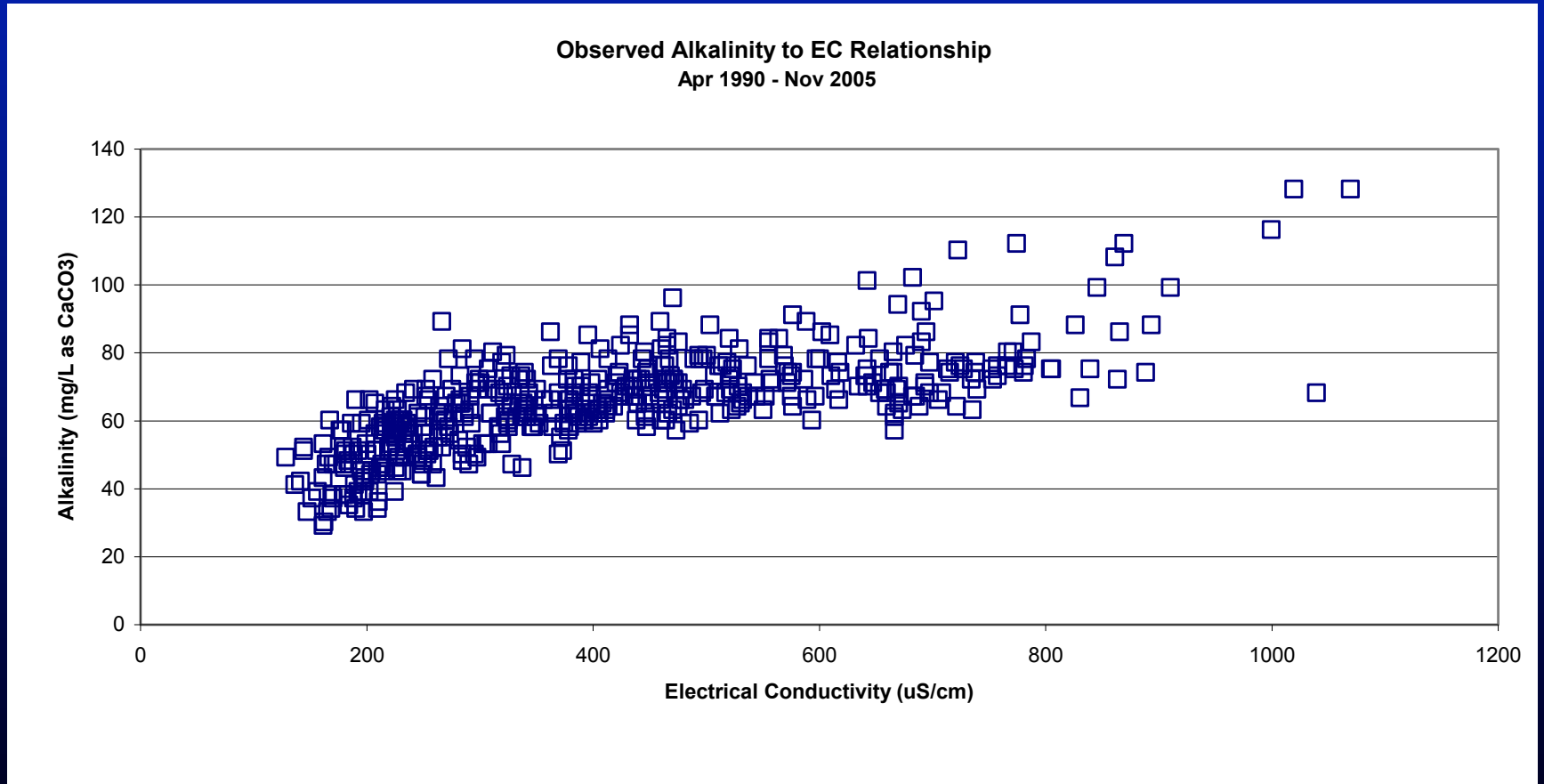
Seawater Fingerprint

Bromide

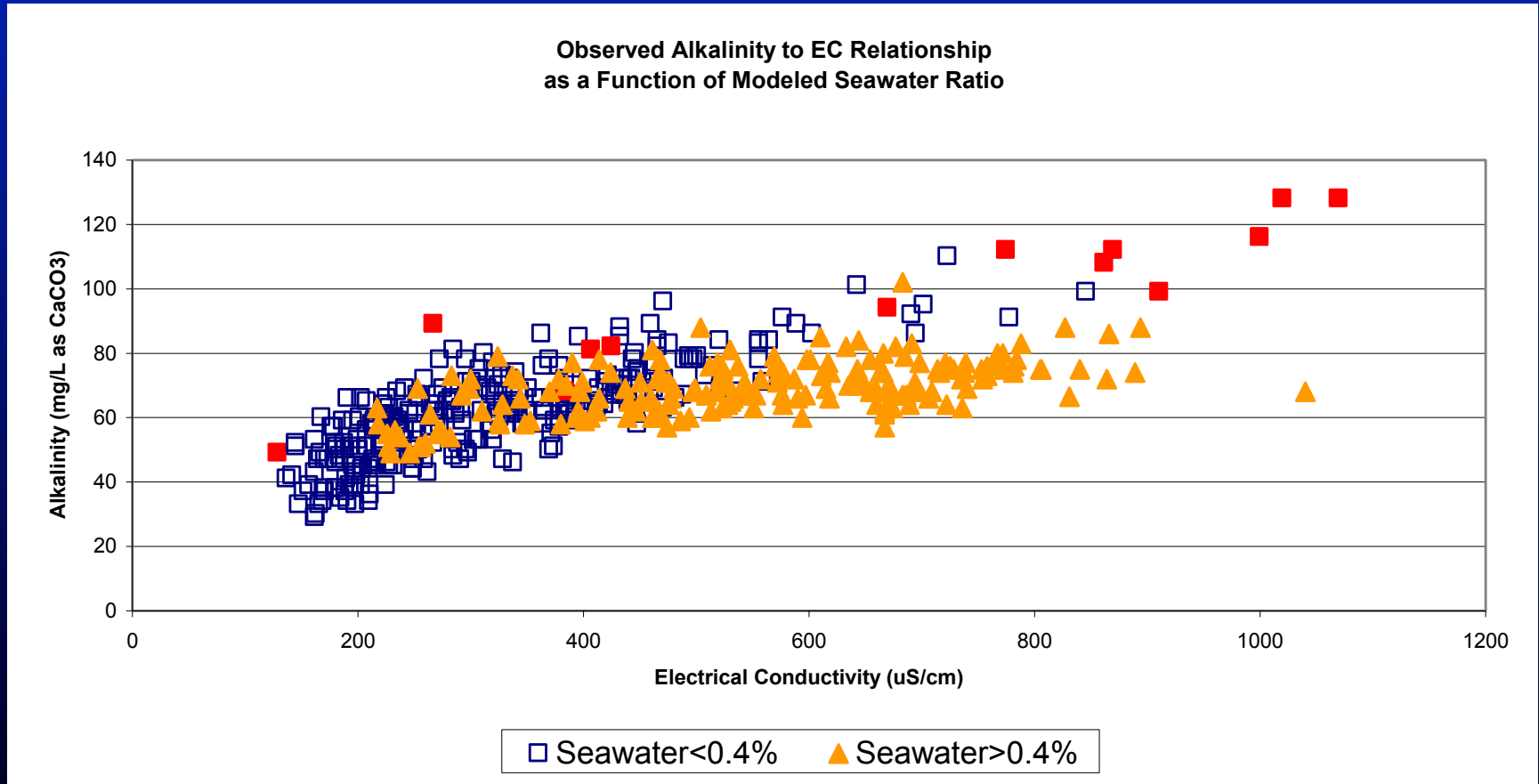


Seawater Fingerprint

Bicarbonate

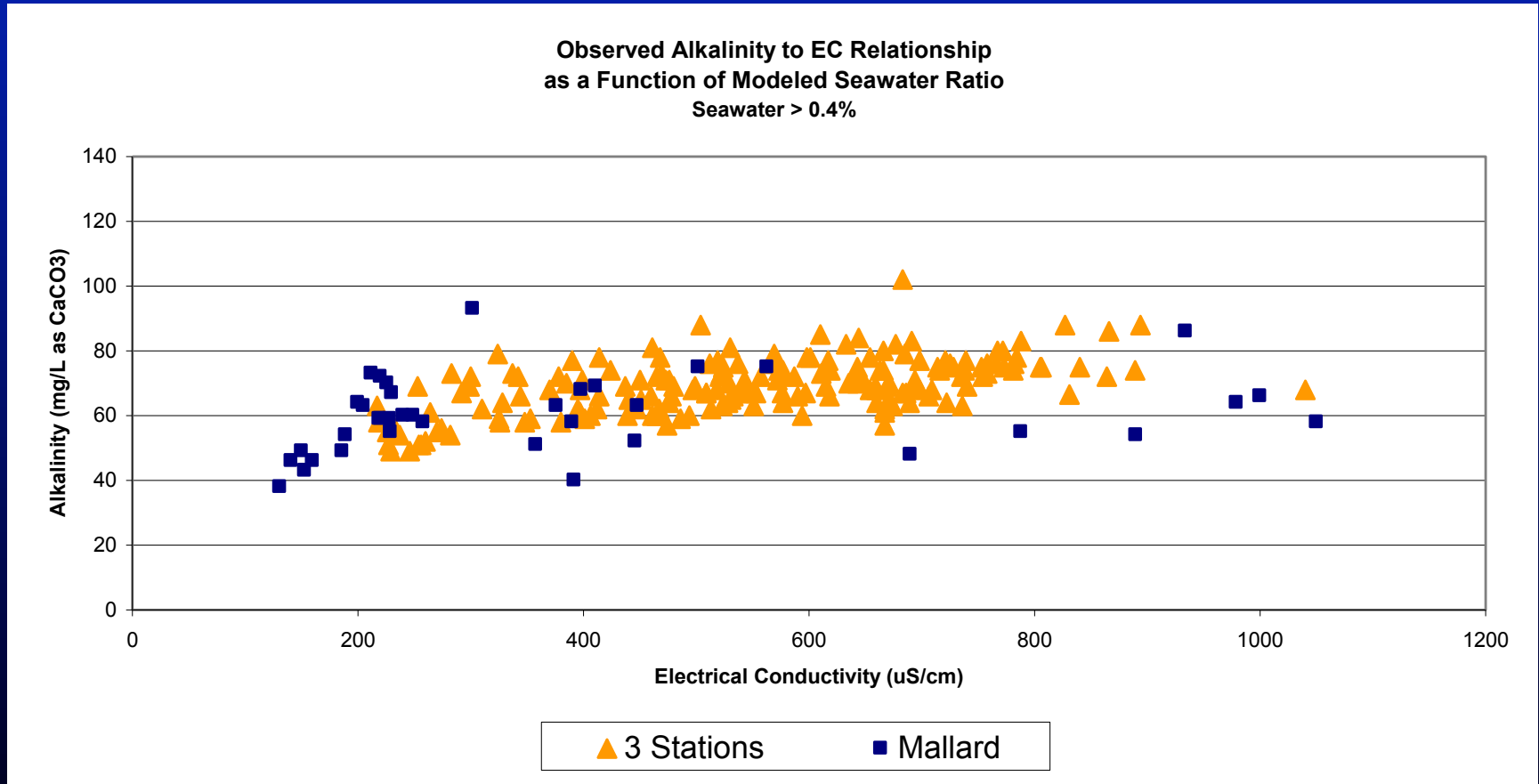


Seawater Fingerprint Bicarbonate



Seawater Fingerprint

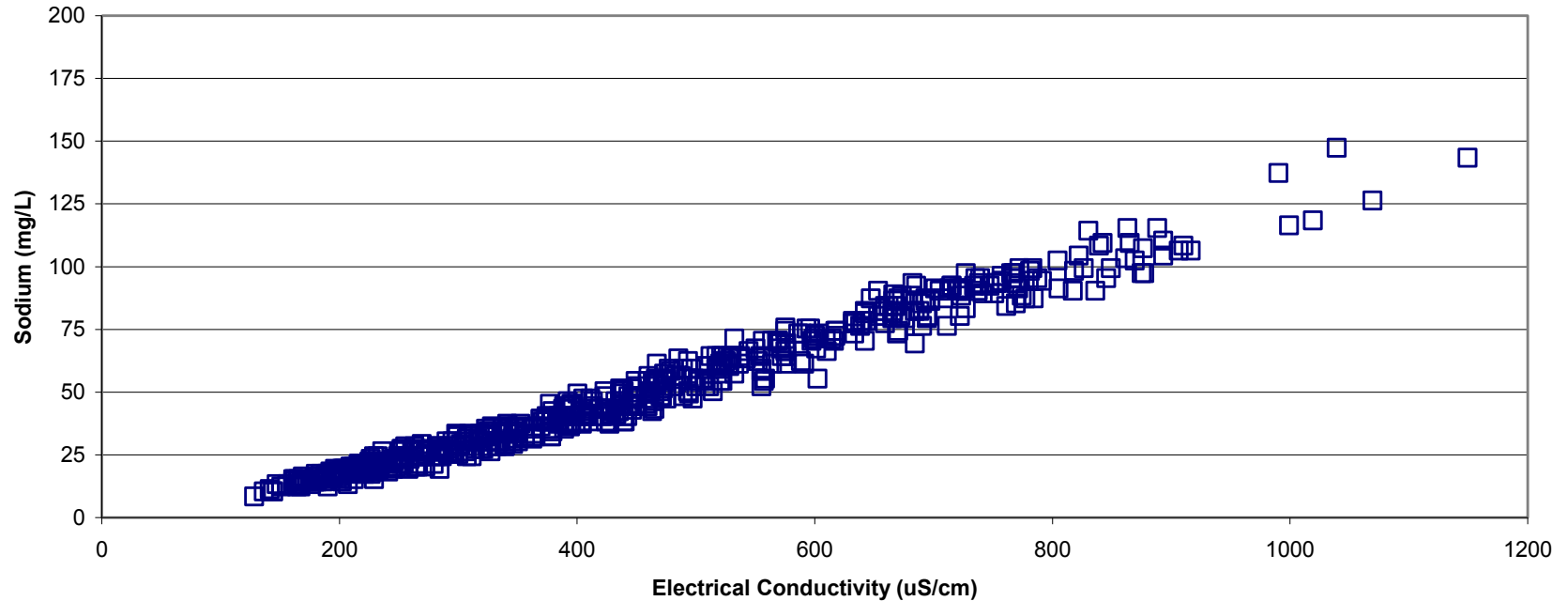
Bicarbonate



Seawater Fingerprint

Sodium

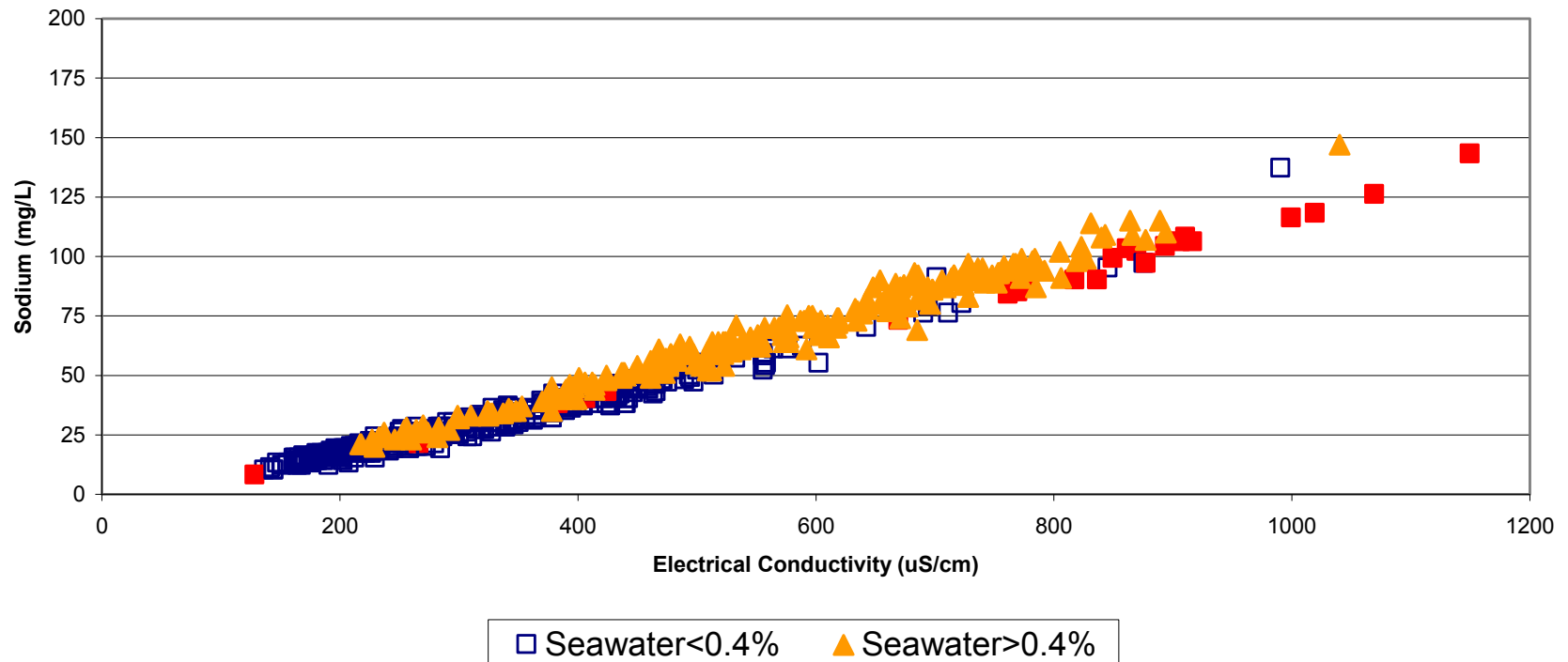
Observed Sodium to EC Relationship
Apr 1990 - Nov 2005



Seawater Fingerprint

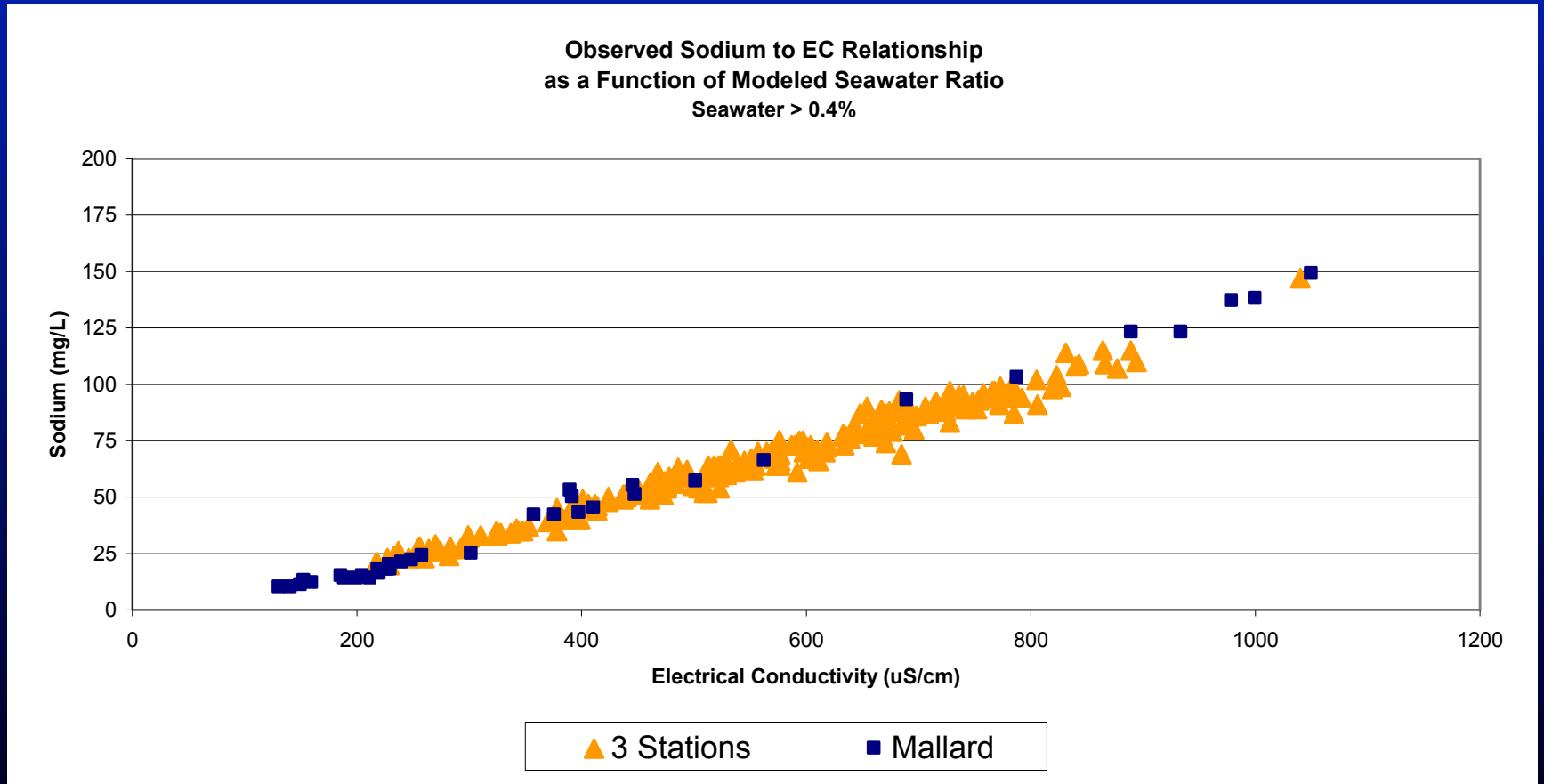
Sodium

Observed Sodium to EC Relationship
as a Function of Modeled Seawater Ratio



Seawater Fingerprint

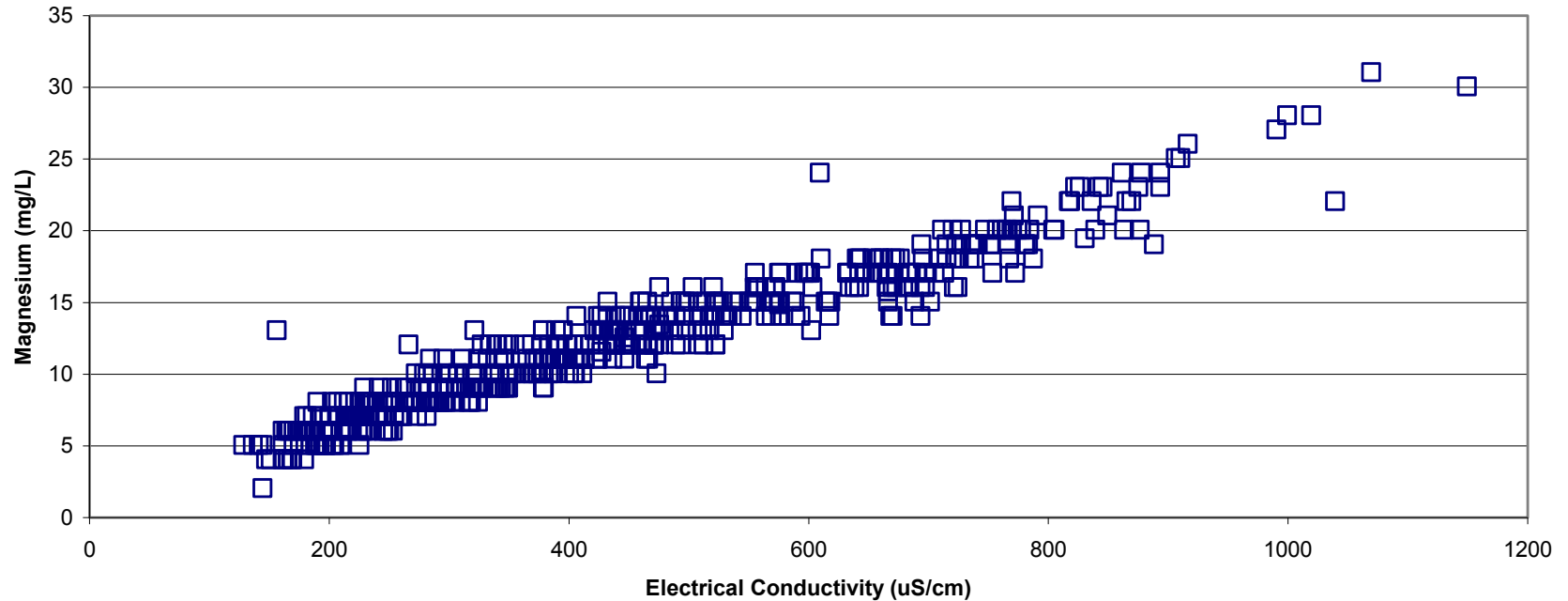
Sodium



Seawater Fingerprint

Magnesium

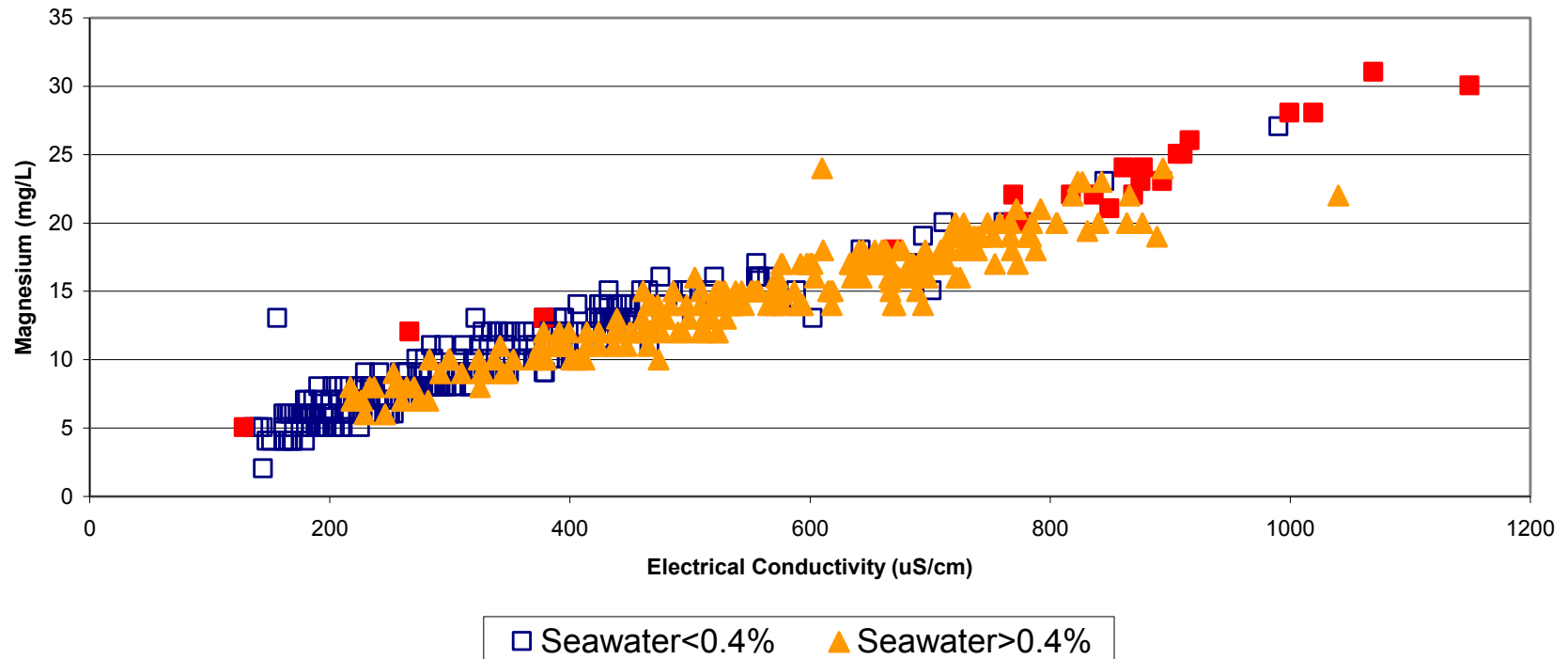
Observed Magnesium to EC Relationship
Apr 1990 - Nov 2005



Seawater Fingerprint

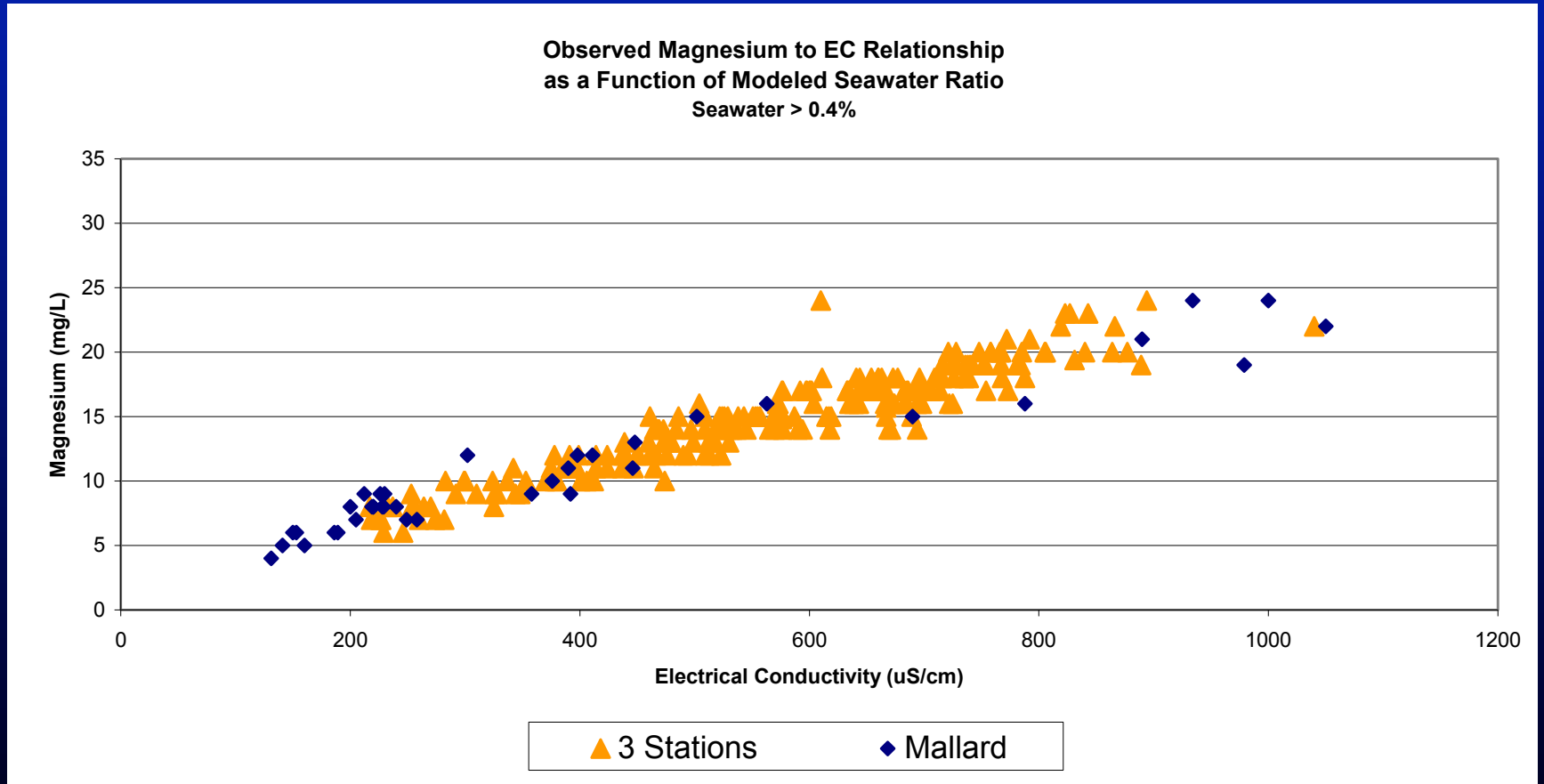
Magnesium

Observed Magnesium to EC Relationship
as a Function of Modeled Seawater Ratio



Seawater Fingerprint

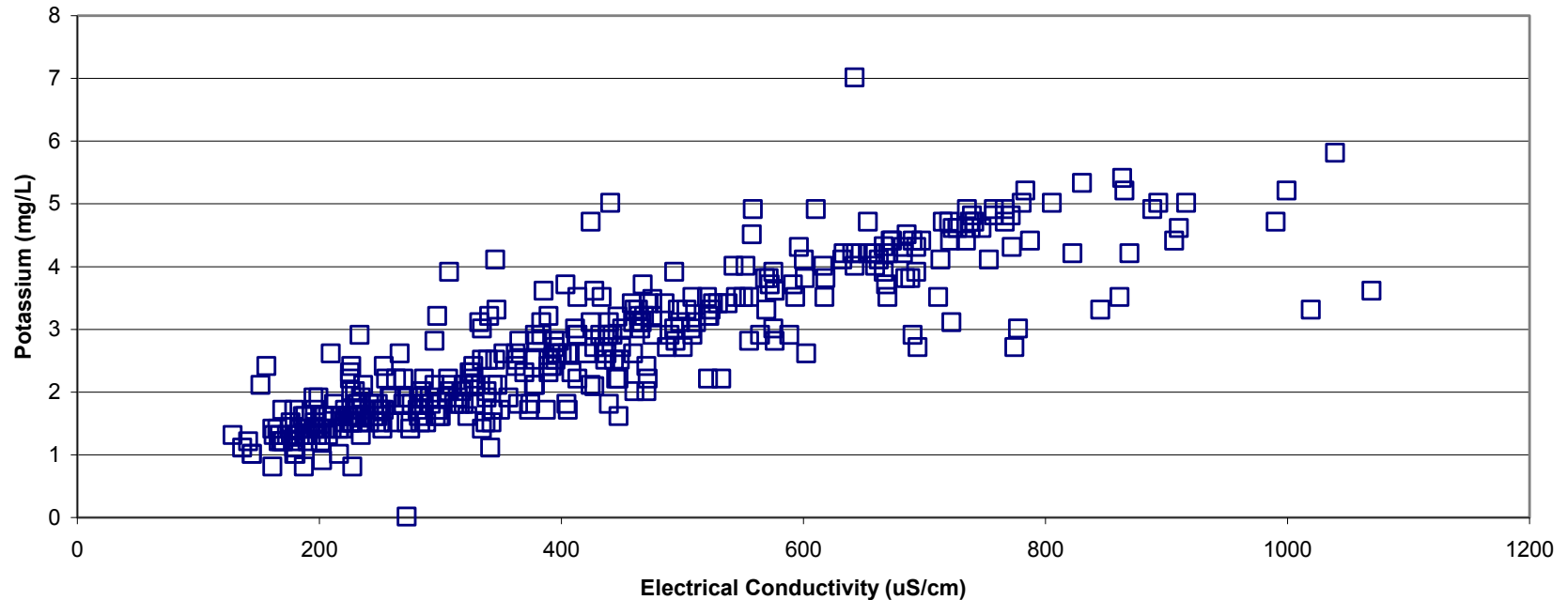
Magnesium



Seawater Fingerprint

Potassium

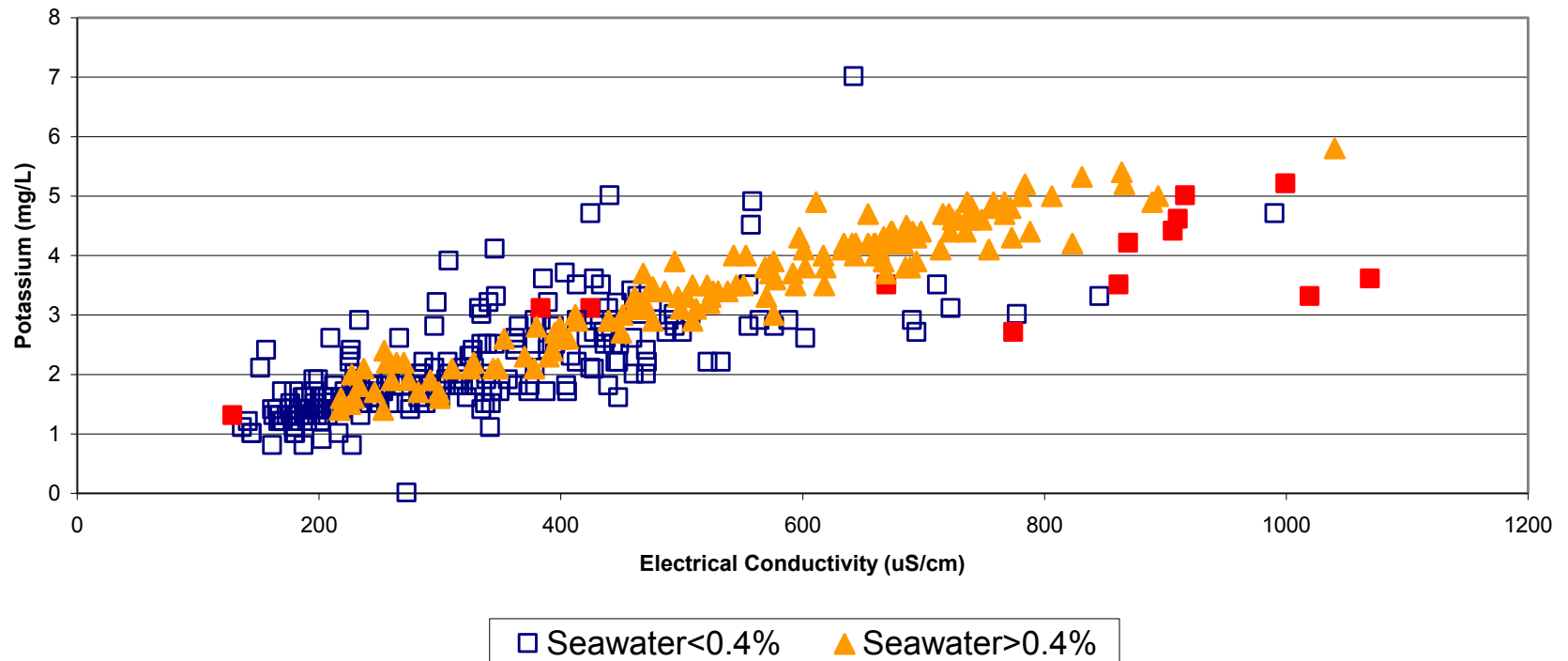
Observed Potassium to EC Relationship
Apr 1990 - Nov 2005



Seawater Fingerprint

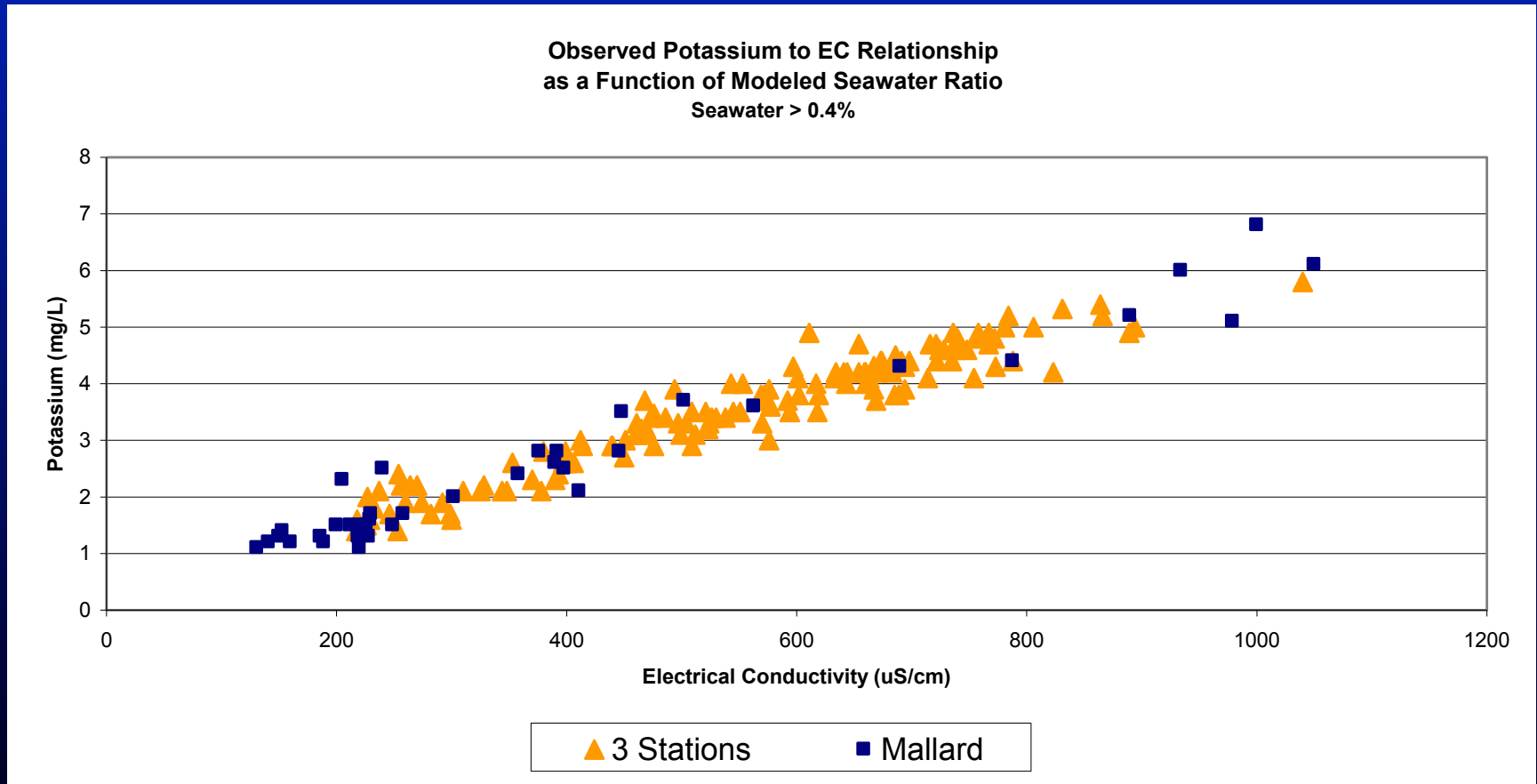
Potassium

Observed Potassium to EC Relationship
as a Function of Modeled Seawater Ratio



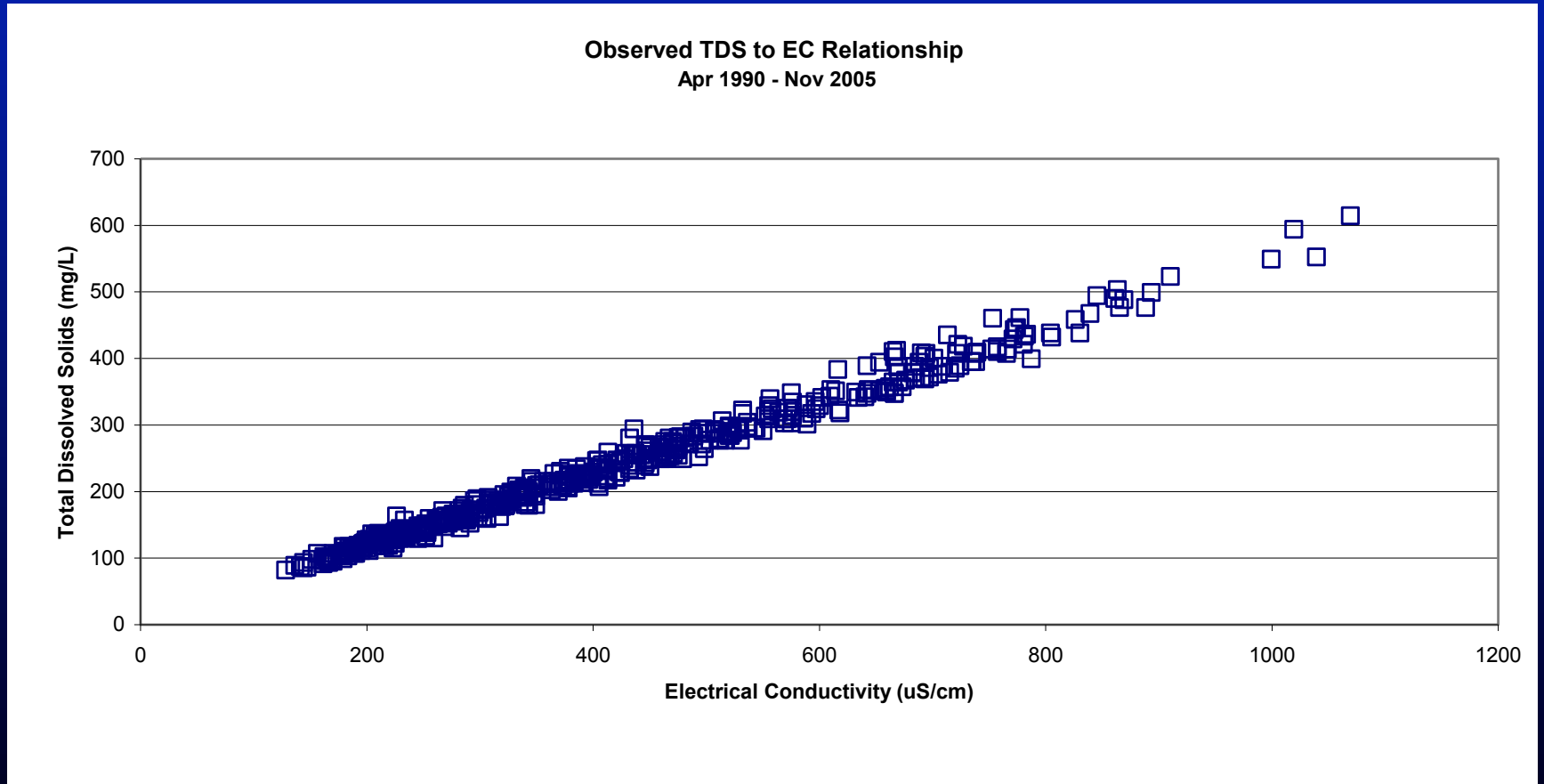
Seawater Fingerprint

Potassium



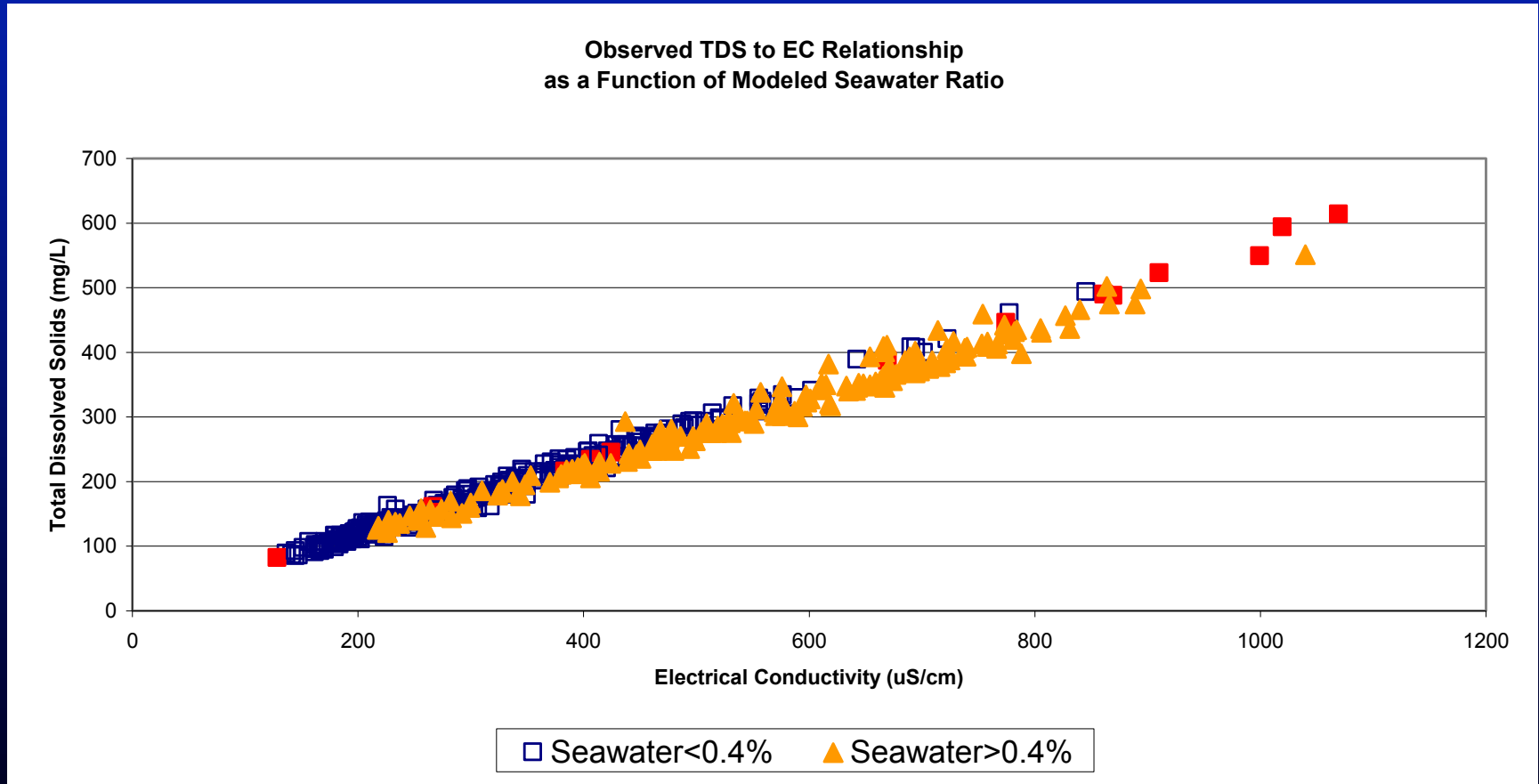
Seawater Fingerprint

Total Dissolved Solids



Seawater Fingerprint

Total Dissolved Solids



Seawater Fingerprint

Total Dissolved Solids

