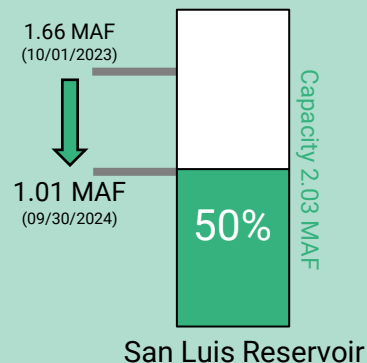
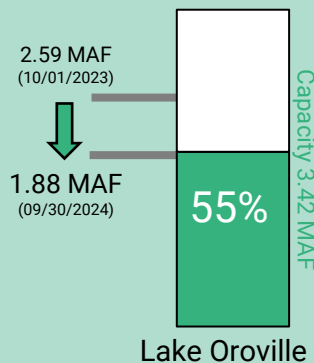
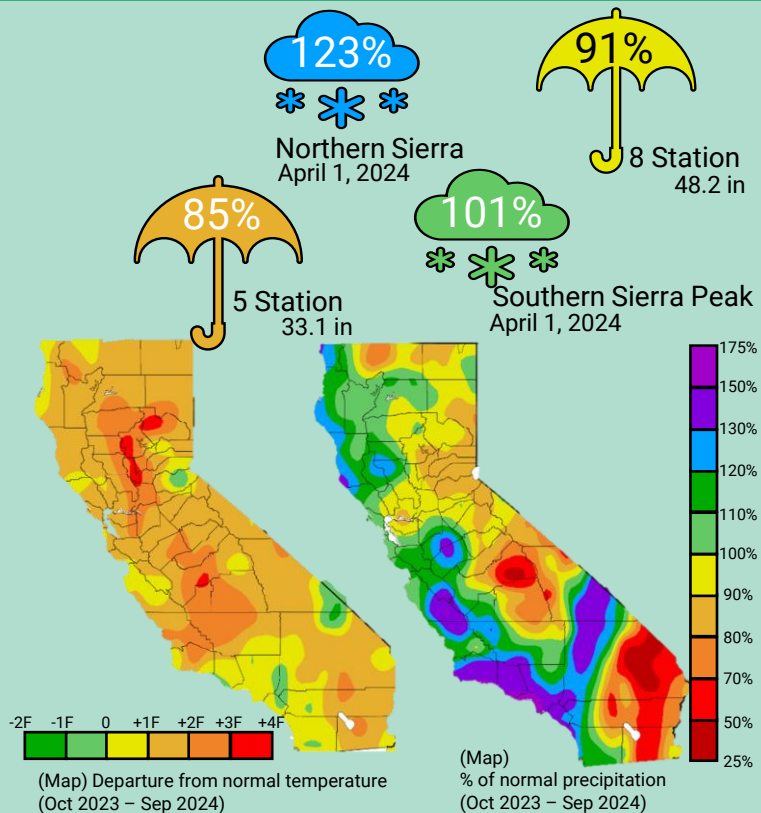
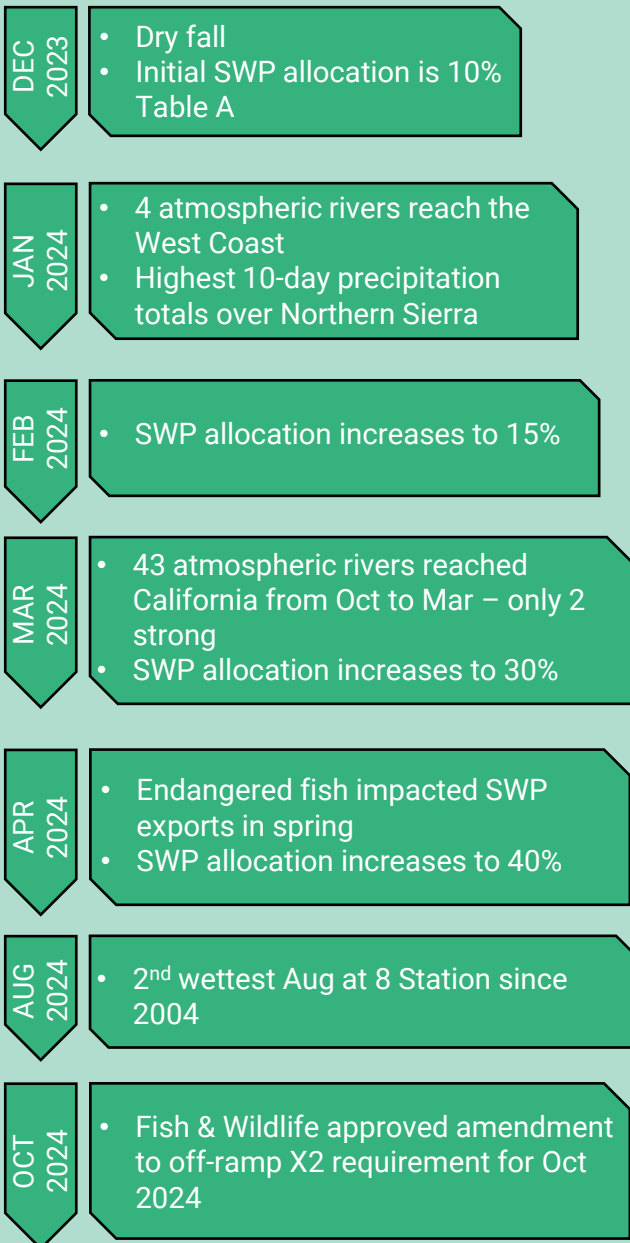
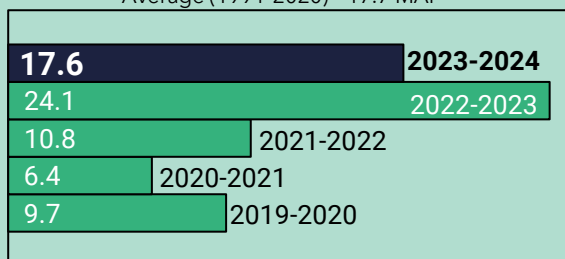




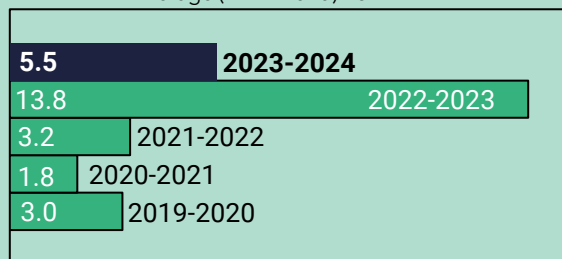
State Water Project



Sacramento River Index Runoff (MAF)
Average (1991-2020) - 17.7 MAF



San Joaquin Valley Runoff (MAF)
Average (1991-2020) - 5.9 MAF





Colorado River

DEC
2023

- Dry fall
- 17.5 million acre-feet stored in Powell and Mead – same as May 2021

JAN
2024

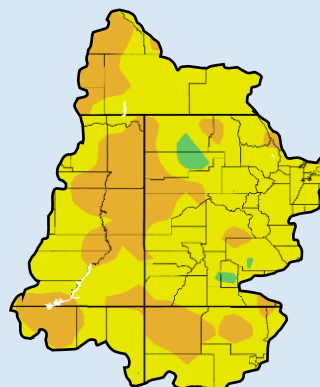
- Precipitation as rain and snow above normal for the first time this water year

MAY
2024

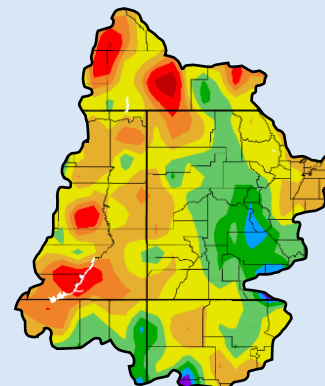
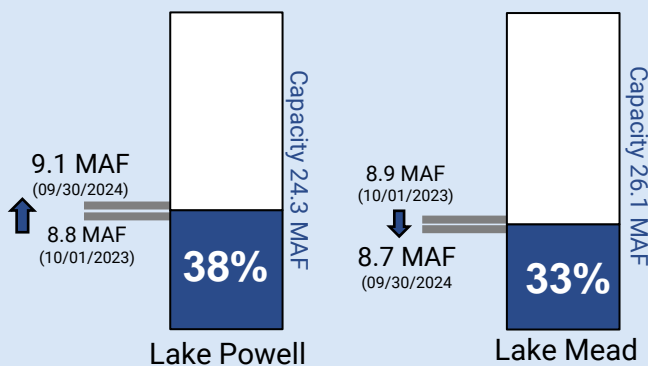
- Secretary of Interior signed the Record of Decision for the Colorado River Interim Guidelines covering 2023-2026
- Reclamation indicates creation of 1.18 million acre-feet of reservoir protection volume in 2023

AUG
2024

- Level 1 shortage for Arizona, Nevada and Mexico set for calendar year 2025
- Imperial Irrigation District implemented a new Deficit Irrigation Program to conserve additional water for system conservation in California

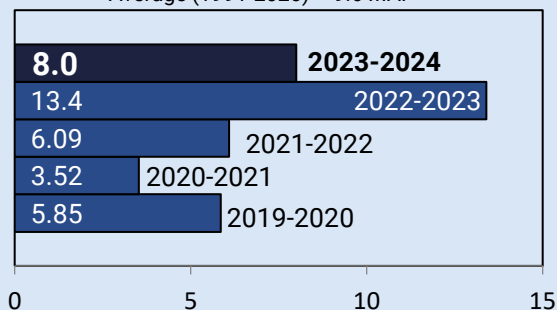
114%
***Basin-wide
April 1, 202499%
☂Basin-wide
29.6 in

-1F 0 +1F +2F

(Map) Departure from normal temperature
(Oct 2023 – Sep 2024)(Map)
% of normal precipitation
(Oct 2023 – Sep 2024)175%
150%
130%
120%
110%
100%
90%
80%
70%
50%
25%

Powell Unregulated Inflow (MAF)

Average (1991-2020) – 9.6 MAF



Lake Mead – Operating Condition

(August 2024 CRMSS ESP Projections)

2025 2026 2027* 2028* 2029*					
Shortage	Surplus (above 1,145 ft)	0%	0%	0%	3%
	Normal Year (between 1,075 and 1,145 ft)	0%	7%	17%	23%
	1st Level (between 1,050 and 1,075 ft)	100%	93%	57%	50%
	2nd Level (between 1,025 and 1,050 ft)	0%	0%	27%	13%
	3rd Level (below 1,025 ft)	0%	0%	13%	10%

* Years beyond 2026 assume continuation of 2007 Interim Guidelines

All data are preliminary and may be subjected to change.
Questions? Email mferreira@mwdh2o.com