

FAST FACTS

WaterFix is part of the state's overall water management portfolio, which includes conservation, water management, recycling, ecosystem protection and more.

KEY PROGRAM GOALS



Secure clean water supplies for 25 million Californians and 3 million acres of farmland.



Improve the Sacramento-San Joaquin Delta's ecosystem.



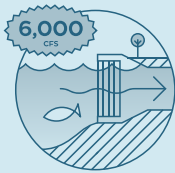
Update California's aging water delivery system.



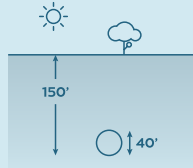
WATER DELIVERY UPGRADE

The Department of Water Resources is proposing to pursue WaterFix as planned, but also explore an option to stage implementation.* This approach is directly responsive to the stated needs of the participating agencies, and would align the project with current funding commitments. It would also allow us to take significant steps toward improving environmental conditions.

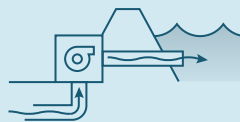
STAGE ONE



Two new intakes, each with a capacity of 3,000 cfs, located on the Sacramento River, closer to high quality water and away from critical habitats.



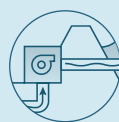
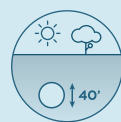
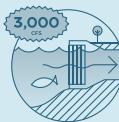
One main tunnel up to 150' below ground designed to protect California's water supplies from sea level rise, earthquakes, floods and levee failure.



A pumping plant to lift water into Clifton Court Forebay.

STAGE TWO

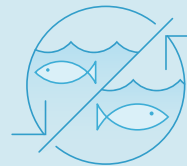
Addition of one new intake with a capacity of 3,000 cfs, a second main tunnel, and a second pumping plant.



*Subject to completion of permitting and environmental review.



IMPROVED RIVER FLOWS AND ECOSYSTEM HEALTH



A return to more natural river flows in the south Delta, minimizing harmful reverse flows caused by powerful pumps.



Continued compliance to meet San Francisco Bay outflow requirements to protect against salt water intrusion and improve the overall health of the Delta ecosystem.



New intake location away from endangered species, with advanced fish screens that protect even the smallest species.



SECURING CLEAN WATER SUPPLIES

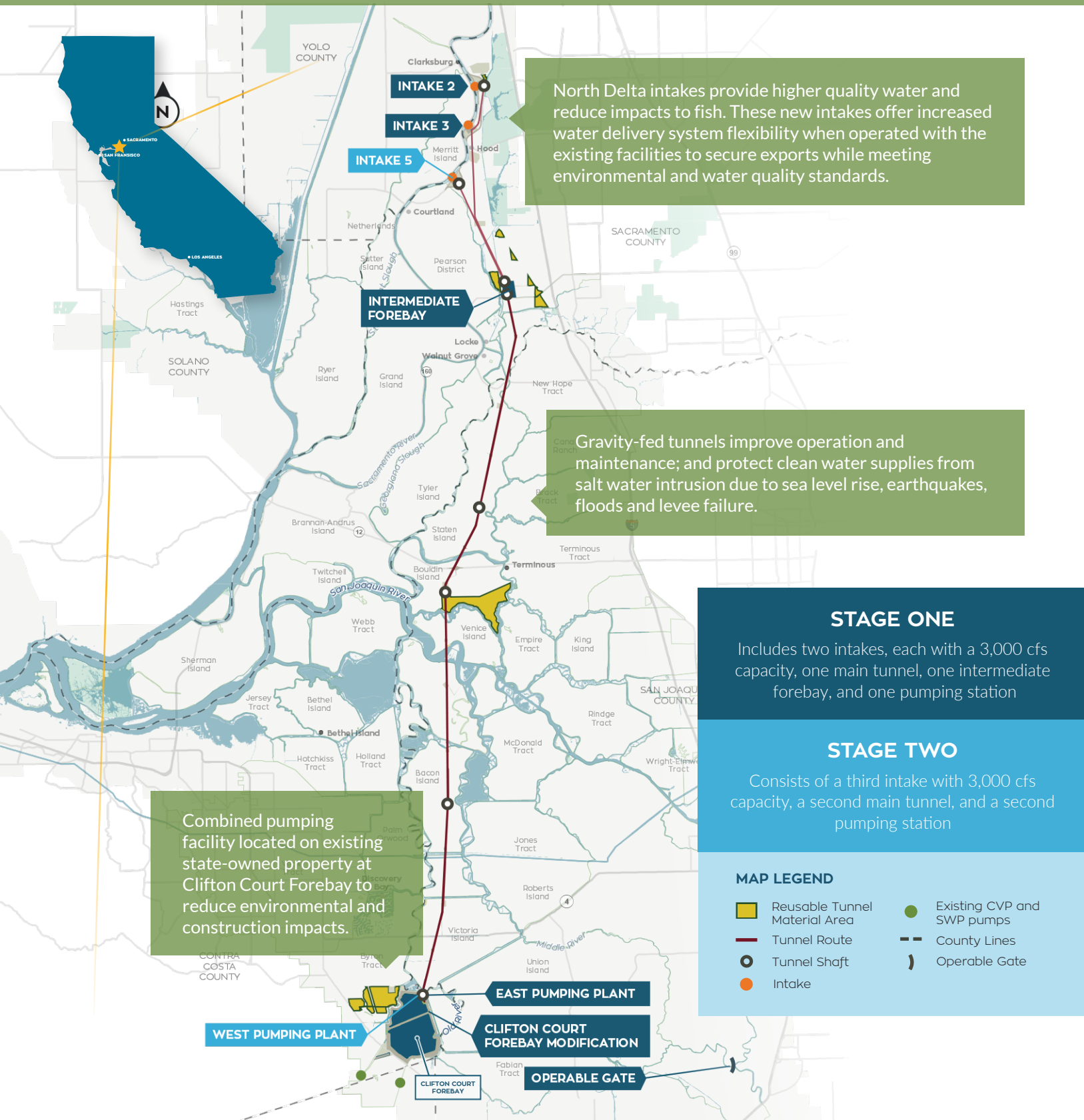
STAGE ONE

4.76 MILLION

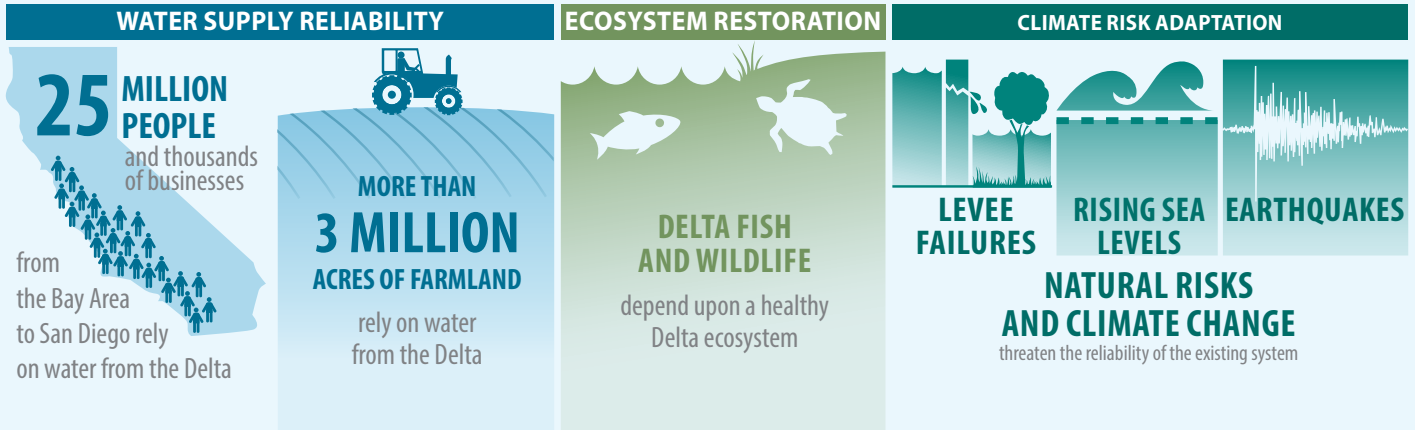
ACRE-FEET ON AVERAGE ANNUALLY

Enough to supply more than 11 million households with water for one year

WaterFix is an upgrade to the state's 50-year-old water infrastructure that will make it easier to move water in an environmentally friendly manner. The current system is outdated, unreliable and dependent on levees that put our clean water supply at risk from earthquakes and sea level rise.



WATERFIX IS IMPORTANT TO CALIFORNIA



STAGE ONE: WATERFIX COST & FUNDING

\$10.7 BILLION
TUNNEL DESIGN & CONSTRUCTION
paid for by Public Water Agencies



\$1.1 BILLION
OPERATIONS & MAINTENANCE
over the life of the project - 50 years
paid for by Public Water Agencies and State / Federal Funding

\$491 MILLION
OPERATIONS & MAINTENANCE
MITIGATION - 25 years
paid for by Public Water Agencies

\$377 MILLION
MITIGATION & ASSOCIATED ACTIONS
paid for by Public Water Agencies

WATERFIX IS GUIDED BY THE BEST AVAILABLE SCIENCE AND PUBLIC INPUT



ADAPTIVE MANAGEMENT & COLLABORATIVE SCIENCE
Address uncertainties and make adjustments over time



OPERATIONAL CRITERIA
New criteria, improved flexibility and protected flows



OVERSIGHT
Coordinated management with state and federal fish and wildlife agencies



PUBLIC INVOLVEMENT
Unprecedented level of public review and comment has helped refine the project

WATERFIX WILL BENEFIT THE DELTA ECOSYSTEM

The new intake locations and technology will minimize reverse flows and reduce impacts to endangered fish. It will maintain water quality and standards needed for a healthy Delta ecosystem.

WaterFix will contribute to the restoration and protection of approximately 15,600 acres of critical Delta habitat as mitigation for ongoing construction and operational impacts, in addition to restoring more natural Delta flow patterns.